

# CRY1 Rabbit pAb

货号: **AYP19247**

## 产品信息

|       |  |
|-------|--|
| 反应    | Human,Mouse,Rat  |
| 宿主    | Rabbit   |
| 克隆性   | Polyclonal   |
| 预测反应  |  |
| 应用    | WB   |
| 推荐浓度  | <b>WB:</b> 1:500 - 1:2000  |
| 理论分子量 | 66kDa  |
| 实测分子量 | 70kDa  |
| 形式    | Liquid   |
| 保存条件  | Store at -20°C. Avoid freeze / thaw cycles.<br>Buffer: PBS with 0.02% sodium azide,50% glycerol,pH7.3. |
| 偶联物   | Unconjugated   |
| 阳性对照  | Mouse testis,Mouse eye,Rat testis,SW480  |
| 细胞定位  | Cytoplasm,Nucleus  |
| 纯化    | Affinity purification  |

## 抗原信息

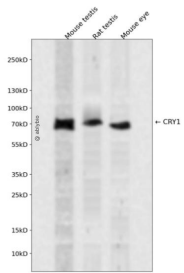
|      |   |
|------|---|
| 抗原信息 | Recombinant fusion protein containing a sequence corresponding to amino acids 1-255 of human CRY1 ( NP_004066.1).   |
| 序列   | MGVNAVHWFRKGLRLHDNPALKECIQGADTIRCVYILDPWFAGSSNVGINRWRFLQCLELDANLRKLNLSRLFVIRGQP<br>ADVFPRLFKEWNITKLSIEYDSEPFGKERDAAIKKLATEAGVEVIVRISHTLYDLDKIIELNQQPPLTYKRFQTLISKMEPLEIP<br>VETITSEVIEKCTTPLSDDHDEKYGVPSLEELGFDTDGLSSAVWPGGETEALTRLERHLERKAWVANFERPRMNANSLLAS<br>PTGLSPYL |

## 靶点信息

|      |   |
|------|---|
| 研究背景 | This gene encodes a flavin adenine dinucleotide-binding protein that is a key component of the circadian core oscillator complex, which regulates the circadian clock. This gene is upregulated by CLOCK/ARNTL heterodimers but then represses this upregulation in a feedback loop using PER/CRY heterodimers to interact with CLOCK/ARNTL. Polymorphisms in this gene have been associated with altered sleep patterns. The encoded protein is widely conserved across plants and animals. Loss of the related gene in mouse results in a shortened circadian cycle in complete darkness. |
|------|---|

|       |                 |
|-------|-----------------|
| 基因ID  | 1407            |
| 基因名   | CRY1            |
| Swiss | Q16526          |
| 别名    | CRY1;PHLL1;DSPD |

## 产品验证



Western blot analysis of CRY1 expressed in Mouse testis,Rat testis,Mouse eye using CRY1 Rabbit pAb at 1:1000. Secondary antibody: HRP Goat Anti-Rabbit IgG (H+L) at 1:5000. Lysates/proteins: 30ug per lane. Blocking buffer: 5% non-fat dry milk in TBST. Detection: ECL Enhanced Kit. Exposure time: 120s.

## 实验步骤

访问官网浏览详情: [www.ablybio.cn](http://www.ablybio.cn)