

LIME1 Rabbit pAb

货号: **AYP19217**

产品信息

反应	Human,Mouse
宿主	Rabbit
克隆性	Polyclonal
预测反应	
应用	WB
推荐浓度	WB: 1:500 - 1:2000
理论分子量	20kDa/31kDa
实测分子量	31kDa-35kDa
形式	Liquid
保存条件	Store at -20°C. Avoid freeze / thaw cycles. Buffer: PBS with 0.01% thiomersal,50% glycerol,pH7.3.
偶联物	Unconjugated
阳性对照	K-562,Mouse lung
细胞定位	Cell membrane,Single-pass type III membrane protein
纯化	Affinity purification

抗原信息

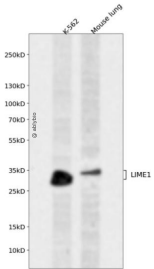
抗原信息	Recombinant fusion protein containing a sequence corresponding to amino acids 1-295 of human LIME1 (NP_060276.2).
序列	MGLPVSWAPPALWVLGCCALLLSLWALCTACRRPEDAVAPRKRARRQRARLQGSATAAEASLLRRTHLCSLSKSDTRLHE LHRGPRSSRALRPASMDLLRPHWLEVSRDITGPQAAPSAFPHQELPRALPAAAATAGCAGLEATYSNVGLAALPGVSLAAS PVVAEYARVQKRKGTHRSPQEPQQGKTEVTPAAQVDVLYSRVCKPKRRDPGPTTDPLDPKGQGAILALAGDLAYQTLPLR ALDVDSGPLENVYESIRELGDPAGRSSTCGAGTPPASSCPSLGRGWRPLPASLP

靶点信息

研究背景	This gene encodes a transmembrane adaptor protein that links the T and B-cell receptor stimulation to downstream signaling pathways via its association with the Src family kinases Lck and Lyn, respectively. Alternative splicing of this gene results in multiple transcript variants.
基因ID	54923

基因名	LIME1
Swiss	Q9H400
别名	LIME1;LIME;dJ583P15.4

产品验证



Western blot analysis of LIME1 expressed in K-562, Mouse lung using LIME1 Rabbit pAb at 1:1000. Secondary antibody: HRP Goat Anti-Rabbit IgG (H+L) at 1:5000. Lysates/proteins: 30ug per lane. Blocking buffer: 5% non-fat dry milk in TBST. Detection: ECL Enhanced Kit. Exposure time: 120s.

实验步骤

访问官网浏览详情: www.ablybio.cn