

DAPP1 Rabbit pAb

货号: **AYP19215**

产品信息

反应	Human,Mouse,Rat
宿主	Rabbit
克隆性	Polyclonal
预测反应	
应用	WB IF/ICC
推荐浓度	WB: 1:500 - 1:2000 IF/ICC: 1:50 - 1:200
理论分子量	32kDa
实测分子量	28kDa
形式	Liquid
保存条件	Store at -20°C. Avoid freeze / thaw cycles. Buffer: PBS with 0.01% thiomersal,50% glycerol,pH7.3.
偶联物	Unconjugated
阳性对照	Rat spleen,Rat lung
细胞定位	Cytoplasm,Membrane,Peripheral membrane protein
纯化	Affinity purification

抗原信息

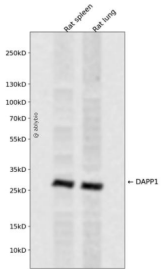
抗原信息	A synthetic peptide corresponding to a sequence within amino acids 100-200 of human DAPP1 (NP_05521 0.2).
序列	SSLKDFVKHFANQPLIGSETGLMVLKHPYPRKVEEPSIYESVRVHTAMQTGRTEDDLVP TAPSLGTKEGYLTKQGGLVKT WKTRWFTLHRNELKYFKDQM

靶点信息

研究背景	May act as a B-cell-associated adapter that regulates B-cell antigen receptor (BCR-signaling downstream of PI3K).
基因ID	27071

基因名	DAPP1
Swiss	Q9UN19
别名	DAPP1;BAM32

产品验证



Western blot analysis of DAPP1 expressed in Rat spleen,Rat lung using DAPP1 Rabbit pAb at 1:1000. Secondary antibody: HRP Goat Anti-Rabbit IgG (H+L) at 1:5000. Lysates/proteins: 30ug per lane. Blocking buffer: 5% non-fat dry milk in TBST. Detection: ECL Enhanced Kit. Exposure time: 120s.

实验步骤

访问官网浏览详情: www.ablybio.cn