

RPL7A Rabbit pAb

货号: **AYP19213**

产品信息

反应	Human,Mouse,Rat
宿主	Rabbit
克隆性	Polyclonal
预测反应	
应用	WB IHC IF/ICC
推荐浓度	WB: 1:500 - 1:2000 IHC: 1:50 - 1:100 IF/ICC: 1:50 - 1:100
理论分子量	29kDa
实测分子量	35kDa
形式	Liquid
保存条件	Store at -20°C. Avoid freeze / thaw cycles. Buffer: PBS with 0.01% thiomersal,50% glycerol,pH7.3.
偶联物	Unconjugated
阳性对照	A-549,A-431,HeLa,U-87MG,Jurkat,MCF7,Mouse kidney,Mouse liver
细胞定位	cytoplasm,cytosol,cytosolic ribosome,focal adhesion,nucleolus,nucleus
纯化	Affinity purification

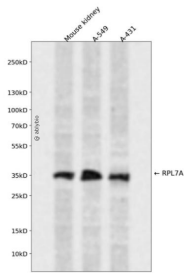
抗原信息

抗原信息	Recombinant fusion protein containing a sequence corresponding to amino acids 1-266 of human RPL7A (NP_000963.1).
序列	MPKGGKAKGKKVAPAPAVVKKQEAKKVVNPLFEKRPKNFGIGQDIQPKRDLTRFVKWPRYIRLQRQRAILYKRLKVPPAINQFTQALDRQTATQLLKLAKHYRPETKQEKKQRLLARAEEKKAAGKGDVPTKRPPVLRAGVNTVTTLVENKKAQLVVIADVDPIELVVFLPALCRKMGVPYCIKGGKARLGRVHRKTCTTVAFTQVNSEDKGALAKLVEAIRNTYNDRYDEIRRHWWGGNVLGPKSVARIAKLEKAKAKELATKLG

靶点信息

研究背景	Cytoplasmic ribosomes, organelles that catalyze protein synthesis, consist of a small 40S subunit and a large 60S subunit. Together these subunits are composed of 4 RNA species and approximately 80 structurally distinct proteins. This gene encodes a ribosomal protein that is a component of the 60S subunit. The protein belongs to the L7AE family of ribosomal proteins. It can interact with a subclass of nuclear hormone receptors, including thyroid hormone receptor, and inhibit their ability to transactivate by preventing their binding to their DNA response elements. This gene is included in the surfeit gene cluster, a group of very tightly linked genes that do not share sequence similarity. It is co-transcribed with the U24, U36a, U36b, and U36c small nucleolar RNA genes, which are located in its second, fifth, fourth, and sixth introns, respectively. This gene rearranges with the trk proto-oncogene to form the chimeric oncogene trk-2h, which encodes an oncoprotein consisting of the N terminus of ribosomal protein L7a fused to the receptor tyrosine kinase domain of trk. As is typical for genes encoding ribosomal proteins, there are multiple processed pseudogenes of this gene dispersed through the genome.
基因ID	6130
基因名	RPL7A
Swiss	P62424
别名	RPL7A;L7A;SURF3;TRUP

产品验证



Western blot analysis of RPL7A expressed in Mouse kidney, A-549, A-431 using RPL7A Rabbit pAb at 1:1000. Secondary antibody: HRP Goat Anti-Rabbit IgG (H+L) at 1:5000. Lysates/proteins: 30ug per lane. Blocking buffer: 5% non-fat dry milk in TBST. Detection: ECL Enhanced Kit. Exposure time: 120s.

实验步骤

访问官网浏览详情: www.ablybio.cn