

SERPINB13 Rabbit pAb

货号: **AYP19205**

产品信息

反应	Human,Mouse,Rat
宿主	Rabbit
克隆性	Polyclonal
预测反应	
应用	WB IHC IF/ICC
推荐浓度	WB: 1:500 - 1:2000 IHC: 1:50 - 1:100 IF/ICC: 1:50 - 1:100
理论分子量	38kDa/44kDa
实测分子量	44kDa
形式	Liquid
保存条件	Store at -20°C. Avoid freeze / thaw cycles. Buffer: PBS with 0.01% thiomersal,50% glycerol,pH7.3.
偶联物	Unconjugated
阳性对照	Mouse uterus,Rat uterus
细胞定位	Cytoplasm
纯化	Affinity purification

抗原信息

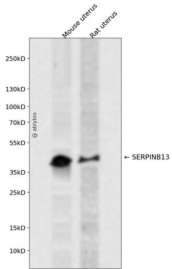
抗原信息	Recombinant fusion protein containing a sequence corresponding to amino acids 1-140 of human SERPIN B13 (NP_036529.1).
序列	MDSLGAVSTRLGFDLKFELKKTNDGNIFFSVPGILTAIGMVLLGTRGATASQLEEVFHSEKETKSSRIKAEKEKVIENTEAVHQQFQKFLTEISKLTNDYELNITNRLFGEKTYLFLQKYLDYVEKYHASLEPVDFVNA

靶点信息

研究背景	The protein encoded by this gene is a member of the serpin family of serine protease inhibitors. The encoded protein inhibits the activity of cathepsin K and is itself transcriptionally repressed by RUNX1. This gene is downregulated in many types of cancer.
基因ID	5275

基因名	SERPINB13
Swiss	Q9UIV8
别名	SERPINB13;HSHUR7SEQ;HUR7;PI13;headpin

产品验证



Western blot analysis of SERPINB13 expressed in Mouse uterus,Rat uterus using SERPINB13 Rabbit pAb at 1:1000. Secondary antibody: HRP Goat Anti-Rabbit IgG (H+L) at 1:5000. Lysates/proteins: 30ug per lane. Blocking buffer: 5% non-fat dry milk in TBST. Detection: ECL Enhanced Kit. Exposure time: 120s.

实验步骤

访问官网浏览详情: www.ablybio.cn