

KLF17 Rabbit pAb

货号: **AYP19204**

产品信息

反应	Human,Mouse
宿主	Rabbit
克隆性	Polyclonal
预测反应	
应用	WB
推荐浓度	WB: 1:500 - 1:2000
理论分子量	42kDa
实测分子量	43kDa
形式	Liquid
保存条件	Store at -20°C. Avoid freeze / thaw cycles. Buffer: PBS with 0.01% thiomersal,50% glycerol,pH7.3.
偶联物	Unconjugated
阳性对照	U-87MG,HepG2,MCF7,Mouse brain
细胞定位	Nucleus
纯化	Affinity purification

抗原信息

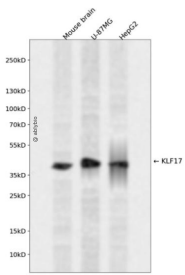
抗原信息	Recombinant fusion protein containing a sequence corresponding to amino acids 210-389 of human KLF17 (NP_775755.3).
序列	QMLPPQDAHDLGMPPAESQSLVLVLSQDSLVSQPDSQEGPFLPEQPGPAPQTVEKNSRPQEGTGRRSSEARPYCCNY ENCGKAYTKRSHLVSHQRKHTGERPYSCNWESCSWSFFRSDELRRHMRVHTRYRKYKCDQCSREFMRSDDLKQHQKT HRPGSDPQANNNNGEQDSPPAAGP

靶点信息

研究背景	Transcription repressor that binds to the promoter of target genes and prevents their expression. Acts as a negative regulator of epithelial-mesenchymal transition and metastasis in breast cancer. Specifically binds the 5'-CACCC-3' sequence in the promoter of ID1, a key metastasis regulator in breast cancer, and repress its expression. May be a germ cell-specific transcription factor that plays important roles in spermatid differentiation and oocyte development (By similarity).
------	--

基因ID	128209
基因名	KLF17
Swiss	Q5JT82
别名	KLF17;ZNF393;Zfp393

产品验证



Western blot analysis of KLF17 expressed in Mouse brain,U-87MG,HepG2 using KLF17 Rabbit pAb at 1:1 000. Secondary antibody: HRP Goat Anti-Rabbit IgG (H+L) at 1:5000. Lysates/proteins: 30ug per lane. B locking buffer: 5% non-fat dry milk in TBST. Detection: ECL Enhanced Kit. Exposure time: 120s.

实验步骤

访问官网浏览详情: www.ablybio.cn