

KRT36 Rabbit pAb

货号: **AYP19202**

产品信息

反应	Human,Rat
宿主	Rabbit
克隆性	Polyclonal
预测反应	
应用	WB IHC
推荐浓度	WB: 1:500 - 1:1000 IHC: 1:50 - 1:200
理论分子量	47kDa/52kDa
实测分子量	52KDa
形式	Liquid
保存条件	Store at -20°C. Avoid freeze / thaw cycles. Buffer: PBS with 0.01% thiomersal,50% glycerol,pH7.3.
偶联物	Unconjugated
阳性对照	Raji,Rat testis
细胞定位	cytoskeleton,cytosol,extracellular exosome,intermediate filament cytoskeleton
纯化	Affinity purification

抗原信息

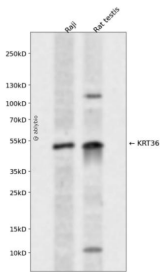
抗原信息	A synthetic peptide corresponding to a sequence within amino acids 100-200 of human KRT36 (NP_00376 2.1).
序列	LNDRLANYLEKVRQLERENAELESRIQEWYEFQIPYICPDYQSYFKTIEDFQQKILLTKSENARLVLQIDNAKLAADDFRTKYE TELSLRQLVEADINGLR

靶点信息

研究背景	The protein encoded by this gene is a member of the keratin gene family. This type I hair keratin is an acidic protein which heterodimerizes with type II keratins to form hair and nails. The type I hair keratins are clustered in a region of chromosome 17q12-q21 and have the same direction of transcription.
基因ID	8689

基因名	KRT36
Swiss	O76013
别名	KRT36;HA6;KRTHA6;hHa6

产品验证



Western blot analysis of KRT36 expressed in Raji,Rat testis using KRT36 Rabbit pAb at 1:1000. Secondary antibody: HRP Goat Anti-Rabbit IgG (H+L) at 1:5000. Lysates/proteins: 30ug per lane. Blocking buffer: 5% non-fat dry milk in TBST. Detection: ECL Enhanced Kit. Exposure time: 120s.

实验步骤

访问官网浏览详情: www.ablybio.cn