

# KLHL3 Rabbit pAb

货号: **AYP19195**

## 产品信息

反应	Human,Mouse
宿主	Rabbit
克隆性	Polyclonal
预测反应	
应用	WB
推荐浓度	<b>WB:</b> 1:500 - 1:2000
理论分子量	55kDa/61kDa/64kDa
实测分子量	75kDa
形式	Liquid
保存条件	Store at -20°C. Avoid freeze / thaw cycles. Buffer: PBS with 0.01% thiomersal,50% glycerol,pH7.3.
偶联物	Unconjugated
阳性对照	293T,A-549,Mouse liver
细胞定位	Cytoplasm,cytoskeleton,cytosol
纯化	Affinity purification

## 抗原信息

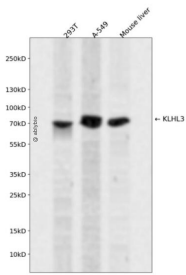
抗原信息	Recombinant fusion protein containing a sequence corresponding to amino acids 1-110 of human KLHL3 (NP_059111.2).
序列	MEGESVKLSSQTLIQAGDDEKNQRTITVNPAPHMGKAFKVMNELRSKQLLCDVMIVAEDVEIEAHRVFLAACSPYFCAMFT GDMSESKAKKIEIKDVDGQTLKSLIDYIYT

## 靶点信息

研究背景	This gene is ubiquitously expressed and encodes a full-length protein which has an N-terminal BTB domain followed by a BACK domain and six kelch-like repeats in the C-terminus. These kelch-like repeats promote substrate ubiquitination of bound proteins via interaction of the BTB domain with the CUL3 (cullin 3) component of a cullin-RING E3 ubiquitin ligase (CRL) complex. Mutations in this gene cause pseudohypoparathyroidism type IID (PHA2D); a rare Mendelian syndrome featuring hypertension, hyperkalemia and metabolic acidosis. Alternative splicing results in multiple transcript variants encoding distinct isoforms.
------	---

基因ID	26249
基因名	KLHL3
Swiss	Q9UH77
别名	KLHL3;PHA2D

## 产品验证



Western blot analysis of KLHL3 expressed in 293T, A-549, Mouse liver using KLHL3 Rabbit pAb at 1:1000. Secondary antibody: HRP Goat Anti-Rabbit IgG (H+L) at 1:5000. Lysates/proteins: 30ug per lane. Blocking buffer: 5% non-fat dry milk in TBST. Detection: ECL Enhanced Kit. Exposure time: 120s.

## 实验步骤

访问官网浏览详情: [www.ablybio.cn](http://www.ablybio.cn)