

ELMO2 Rabbit pAb

货号: **AYP19190**

产品信息

反应	Human,Mouse,Rat
宿主	Rabbit
克隆性	Polyclonal
预测反应	
应用	WB
推荐浓度	WB: 1:500 - 1:2000
理论分子量	72kDa/82kDa
实测分子量	83kDa
形式	Liquid
保存条件	Store at -20°C. Avoid freeze / thaw cycles. Buffer: PBS with 0.01% thiomersal,50% glycerol,pH7.3.
偶联物	Unconjugated
阳性对照	HeLa,Mouse brain,Rat brain
细胞定位	Cytoplasm,Membrane,cytosol
纯化	Affinity purification

抗原信息

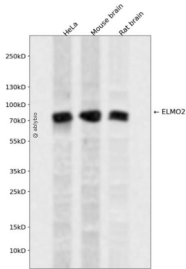
抗原信息	Recombinant fusion protein containing a sequence corresponding to amino acids 42-120 of human ELMO 2 (NP_877496.1).
序列	SLPNPEYYTLRYADGPQLYITEQTRSDIKNGTILQLAISPSRAARQLMERTQSSNMETRLDAMKELAKLSADVTFATEF

靶点信息

研究背景	The protein encoded by this gene interacts with the dedicator of cyto-kinesis 1 protein. Similarity to a C. e legans protein suggests that this protein may function in phagocytosis of apoptotic cells and in cell migration. Alternative splicing results in multiple transcript variants.
基因ID	63916
基因名	ELMO2

Swiss	Q96JJ3
别名	ELMO2;CED-12;CED12;Ced-12A;ELMO-2;VMPI

产品验证



Western blot analysis of ELMO2 expressed in HeLa, Mouse brain, Rat brain using ELMO2 Rabbit pAb at 1:1000. Secondary antibody: HRP Goat Anti-Rabbit IgG (H+L) at 1:5000. Lysates/proteins: 30ug per lane. Blocking buffer: 5% non-fat dry milk in TBST. Detection: ECL Enhanced Kit. Exposure time: 120s.

实验步骤

访问官网浏览详情: www.ablybio.cn