

GCC2 Rabbit pAb

货号: **AYP19183**

产品信息

反应	Human,Mouse
宿主	Rabbit
克隆性	Polyclonal
预测反应	
应用	WB IHC
推荐浓度	WB: 1:500 - 1:2000 IHC: 1:50 - 1:200
理论分子量	5kDa/195kDa
实测分子量	196kDa
形式	Liquid
保存条件	Store at -20°C. Avoid freeze / thaw cycles. Buffer: PBS with 0.01% thiomersal,50% glycerol,pH7.3.
偶联物	Unconjugated
阳性对照	HeLa,LO2,22Rv1,Raji,SGC-7901,293T
细胞定位	Cytoplasm,Golgi apparatus,Peripheral membrane protein,trans-Golgi network membrane
纯化	Affinity purification

抗原信息

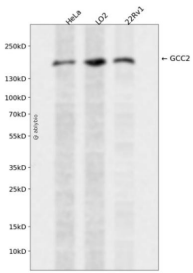
抗原信息	Recombinant fusion protein containing a sequence corresponding to amino acids 1-300 of human GCC2 (NP_852118.1).
序列	MEDLVQDGVASPATPGTGKSKLETLPKEDLIKFAKQMMLIQKAKSRCTELEKEIEELRSKPVTEGTGDIKALTERLDALLLE KAETEQQCLSLKKNIKMKQEVESVTKMGDAHKELEQSHINYVKEIENLKNELMAVRSKYSEDKANLQKQLEEAMNTQL ELSEQLKFQNNSEDNVKKLQEEIEKIRPGFEEQILYLQKQLDATTDEKKETVTQLQNIIEANSQHYQKNINSLQEELLQLKAIH QEEVKELMCQIEASAKEHEAEINKLNELKENLVKQCEASEKNIQKKECELE

靶点信息

研究背景	The protein encoded by this gene is a peripheral membrane protein localized to the trans-Golgi network. It is sensitive to brefeldin A. This encoded protein contains a GRIP domain which is thought to be used in targeting. Alternative splicing results in multiple transcript variants.
------	---

基因ID	9648
基因名	GCC2
Swiss	Q81WJ2
别名	GCC2;GCC185;RANBP2L4;REN53

产品验证



Western blot analysis of GCC2 expressed in HeLa, LO2, 22Rv1 using GCC2 Rabbit pAb at 1:1000. Secondary antibody: HRP Goat Anti-Rabbit IgG (H+L) at 1:5000. Lysates/proteins: 30ug per lane. Blocking buffer: 5% non-fat dry milk in TBST. Detection: ECL Enhanced Kit. Exposure time: 120s.

实验步骤

访问官网浏览详情: www.ablybio.cn