

CD300LF Rabbit pAb

货号: **AYP19176**

产品信息

反应	Human,Mouse,Rat
宿主	Rabbit
克隆性	Polyclonal
预测反应	
应用	WB
推荐浓度	WB: 1:500 - 1:2000
理论分子量	18kDa/21kDa/26kDa/32kDa
实测分子量	27kDa
形式	Liquid
保存条件	Store at -20°C. Avoid freeze / thaw cycles. Buffer: PBS with 0.01% thiomersal,50% glycerol,pH7.3.
偶联物	Unconjugated
阳性对照	K-562,U-937,Rat brain
细胞定位	Cell membrane,Single-pass type I membrane protein
纯化	Affinity purification

抗原信息

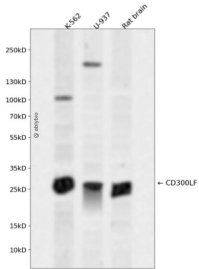
抗原信息	Recombinant fusion protein containing a sequence corresponding to amino acids 23-150 of human CD300 LF (NP_001276011.1).
序列	TQITGPTTVNGLERGLTVQCVYRSGWETYLKWWCRGAIWRDCKILVKTSGSEQEVKRDRVSIKDNQKNRTFTVTMEDL MKTDADTYWCGIEKTGNDLGVTVQVTIDPAPVTQEETSSSPTLTGHHL

靶点信息

研究背景	This gene encodes a member of the CD300 protein family. Members of this family are cell surface glycoproteins with a single IgV-like extracellular domain, and are involved in the regulation of immune response. The encoded protein is an inhibitory receptor. Alternative splicing results in multiple transcript variants.
基因ID	146722

基因名	CD300LF
Swiss	Q8TDQ1
别名	CD300LF;CD300f;CLM-1;CLM1;IREM-1;IREM1;lgSF13;LMIR3;NKIR

产品验证



Western blot analysis of CD300LF expressed in K-562,U-937,Rat brain using CD300LF Rabbit pAb at 1:1000. Secondary antibody: HRP Goat Anti-Rabbit IgG (H+L) at 1:5000. Lysates/proteins: 30ug per lane . Blocking buffer: 5% non-fat dry milk in TBST. Detection: ECL Enhanced Kit. Exposure time: 120s.

实验步骤

访问官网浏览详情: www.ablybio.cn