

CRACR2A Rabbit pAb

货号: **AYP19173**

产品信息

反应	Human,Mouse
宿主	Rabbit
克隆性	Polyclonal
预测反应	
应用	WB IHC
推荐浓度	WB: 1:500 - 1:2000 IHC: 1:50 - 1:200
理论分子量	45kDa/83kDa
实测分子量	45kDa
形式	Liquid
保存条件	Store at -20°C. Avoid freeze / thaw cycles. Buffer: PBS with 0.01% thiomersal,50% glycerol,pH7.3.
偶联物	Unconjugated
阳性对照	Mouse liver
细胞定位	Cytoplasm
纯化	Affinity purification

抗原信息

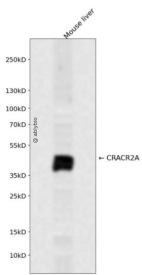
抗原信息	Recombinant fusion protein containing a sequence corresponding to amino acids 1-200 of human CRACR 2A (NP_001138430.1).
序列	MAAPDGRVVSRRPQRLGQSGQGPKGSGACLHPLDSLEQKETQEQTSGQLVMLRKAQEFFQTCD AEGKGFARKDMQR LHKELPLSLEELEDVFDALDADGNGYLTPQEFTTGFSHFFSQNNPSQEDAGEQVAQRHEEKVYLSRGDEDLGDMGEDE EAQFRMLMDRLGAQKVLEDESVDKQLWLQLKKEEPHLLSNFEDF

靶点信息

研究背景	[Isoform 1]: Ca(2+)-binding protein that plays a key role in store-operated Ca(2+ entry (SOCE in T-cells by regulating CRAC channel activation. Acts as a cytoplasmic calcium-sensor that facilitates the clustering of ORAI1 and STIM1 at the junctional regions between the plasma membrane and the endoplasmic reticulum upon low Ca(2+ concentration. It thereby regulates CRAC channel activation, including translocation and clustering of ORAI1 and STIM1. Upon increase of cytoplasmic Ca(2+ resulting from opening of CRAC channels, dissociates from ORAI1 and STIM1, thereby destabilizing the ORAI1-STIM1 complex.
------	---------------------------------------------------------------------------------------------------------------------------------------------------------------------------------------------------------------------------------------------------------------------------------------------------------------------------------------------------------------------------------------------------------------------------------------------------------------------------------------------------------------------------------------------------------------------------------------------------------------------------------

基因ID	84766
基因名	CRACR2A
Swiss	Q9BSW2
别名	CRACR2A;EFCAB4B

产品验证



Western blot analysis of CRACR2A expressed in Mouse liver using CRACR2A Rabbit pAb at 1:1000. Secondary antibody: HRP Goat Anti-Rabbit IgG (H+L) at 1:5000. Lysates/proteins: 30ug per lane. Blocking buffer: 5% non-fat dry milk in TBST. Detection: ECL Enhanced Kit. Exposure time: 120s.

实验步骤

访问官网浏览详情: www.ablybio.cn