

# LETM2 Rabbit pAb

货号: **AYP19157**

## 产品信息

反应	Human,Mouse,Rat
宿主	Rabbit
克隆性	Polyclonal
预测反应	
应用	WB
推荐浓度	<b>WB:</b> 1:500 - 1:2000
理论分子量	30kDa/44kDa/50kDa/55kDa
实测分子量	54kDa
形式	Liquid
保存条件	Store at -20°C. Avoid freeze / thaw cycles. Buffer: PBS with 0.01% thiomersal,50% glycerol,pH7.3.
偶联物	Unconjugated
阳性对照	NCI-H460,293T,U-87MG,Mouse brain,Mouse testis,Mouse lung,Rat brain,Rat testis,Rat lung
细胞定位	Mitochondrion inner membrane,Single-pass membrane protein
纯化	Affinity purification

## 抗原信息

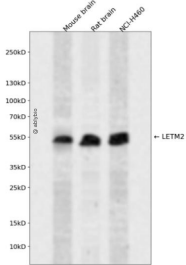
抗原信息	Recombinant fusion protein containing a sequence corresponding to amino acids 257-396 of human LETM2 (NP_653253.1).
序列	MRSGLTTEEQLRQQLTEWQDLHLKENVPPSLLLLSRTFYLDVVKPKPIEPLSGEAPKTDILVELPTFTESKENMVDLAPQLKG TKDEDFIQPPPVTSSPITPSTPISLPKGPITSSEEPTLQAKSQMTAQNSKASSKGA

## 靶点信息

研究背景	Predicted to enable ribosome binding activity. Predicted to be involved in cellular metal ion homeostasis. Predicted to be located in mitochondrial inner membrane. Predicted to be integral component of membrane.
基因ID	137994

基因名	LETM2
Swiss	Q2VYF4
别名	LETM2

## 产品验证



Western blot analysis of LETM2 expressed in Mouse brain,Rat brain,NCI-H460 using LETM2 Rabbit pAb at 1:1000. Secondary antibody: HRP Goat Anti-Rabbit IgG (H+L) at 1:5000. Lysates/proteins: 30ug per lane. Blocking buffer: 5% non-fat dry milk in TBST. Detection: ECL Enhanced Kit. Exposure time: 120s.

## 实验步骤

访问官网浏览详情: [www.ablybio.cn](http://www.ablybio.cn)