

RNASEH2C Rabbit pAb

货号: **AYP19153**

产品信息

反应	Human
宿主	Rabbit
克隆性	Polyclonal
预测反应	
应用	WB
推荐浓度	WB: 1:500 - 1:2000
理论分子量	17kDa
实测分子量	20kDa
形式	Liquid
保存条件	Store at -20°C. Avoid freeze / thaw cycles. Buffer: PBS with 0.01% thiomersal, 50% glycerol, pH7.3.
偶联物	Unconjugated
阳性对照	293T, HeLa
细胞定位	Nucleus
纯化	Affinity purification

抗原信息

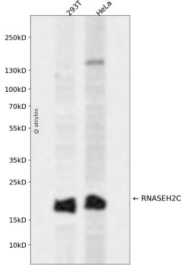
抗原信息	Recombinant fusion protein containing a sequence corresponding to amino acids 1-164 of human RNASE H2C (NP_115569.2).
序列	MESGDEAAIERHRVHLRSATLRDAVPATLHLLPCEVAVDGPAPVGRFFTPAIRQGPEGLEVSFRGRCLRGEEVAVPPGLVGYVMVTEEEKVSMGKPDPLRDSGTDDQEEPLERDFDRFIGATANFSRFTLWGLETIPGPDAKVRGALTWPSLAAAIHAQVPED

靶点信息

研究背景	This gene encodes a ribonuclease H subunit that can cleave ribonucleotides from RNA:DNA duplexes. Mutations in this gene cause Aicardi-Goutieres syndrome-3, a disease that causes severe neurologic dysfunction. A pseudogene for this gene has been identified on chromosome Y, near the sex determining region Y (SRY) gene.
基因ID	84153

基因名	RNASEH2C
Swiss	Q8TDP1
别名	RNASEH2C;AGS3;AYP1

产品验证



Western blot analysis of RNASEH2C expressed in 293T, HeLa using RNASEH2C Rabbit pAb at 1:1000. Secondary antibody: HRP Goat Anti-Rabbit IgG (H+L) at 1:5000. Lysates/proteins: 30ug per lane. Blocking buffer: 5% non-fat dry milk in TBST. Detection: ECL Enhanced Kit. Exposure time: 120s.

实验步骤

访问官网浏览详情: www.ablybio.cn