

# CEP70 Rabbit pAb

货号: **AYP19152**

## 产品信息

反应	Human,Rat
宿主	Rabbit
克隆性	Polyclonal
预测反应	
应用	WB
推荐浓度	<b>WB:</b> 1:500 - 1:2000
理论分子量	25kDa/64kDa/67kDa/69kDa
实测分子量	72kDa
形式	Liquid
保存条件	Store at -20°C. Avoid freeze / thaw cycles. Buffer: PBS with 0.01% thiomersal,50% glycerol,pH7.3.
偶联物	Unconjugated
阳性对照	A-431,A-549,Rat testis
细胞定位	Cytoplasm,centrosome,cytoskeleton,microtubule organizing center
纯化	Affinity purification

## 抗原信息

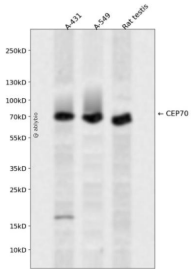
抗原信息	Recombinant fusion protein containing a sequence corresponding to amino acids 1-280 of human CEP70 (NP_077817.2).
序列	MFPVAPKPDSSQPSDRMTEKQEEAEWESINVLLMMHGLKPLSLVKRTDLKDLIIFDKQSSQRMQRNLKLLVEETSCQ QNMIQELIETNQQLRNELQLEQSRAANQEQRANDLEQIMESVKSKIGELEDLSRACHQQNKIKDLQKEQKTLQVKCQH YKKRTEQEETIASLQMEVCRLKKEEEDRIVTQNRVFAYLCKRVPHTVLDRQLLCLIDYYESKIRKIHTQRQYKEDESQSEEE NDYRNLDASPTYKLLMSLQNLKESKSKIDALSSEK

## 靶点信息

研究背景	Plays a role in the organization of both preexisting and nascent microtubules in interphase cells. During mitosis, required for the organization and orientation of the mitotic spindle.
基因ID	80321

基因名	CEP70
Swiss	Q8NHQ1
别名	CEP70;BITE

## 产品验证



Western blot analysis of CEP70 expressed in A-431,A-549,Rat testis using CEP70 Rabbit pAb at 1:1000. Secondary antibody: HRP Goat Anti-Rabbit IgG (H+L) at 1:5000. Lysates/proteins: 30ug per lane. Blocking buffer: 5% non-fat dry milk in TBST. Detection: ECL Enhanced Kit. Exposure time: 120s.

## 实验步骤

访问官网浏览详情: [www.ablybio.cn](http://www.ablybio.cn)