

GTSE1 Rabbit pAb

货号: **AYP19142**

产品信息

反应	Human,Mouse,Rat
宿主	Rabbit
克隆性	Polyclonal
预测反应	
应用	WB
推荐浓度	WB: 1:500 - 1:2000
理论分子量	76kDa
实测分子量	77kDa
形式	Liquid
保存条件	Store at -20°C. Avoid freeze / thaw cycles. Buffer: PBS with 0.01% thiomersal,50% glycerol,pH7.3.
偶联物	Unconjugated
阳性对照	LO2,U-87MG,HeLa,Mouse spleen,Rat spleen
细胞定位	Cytoplasm,cytoskeleton
纯化	Affinity purification

抗原信息

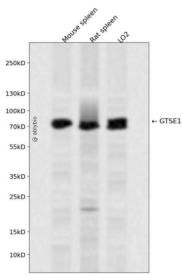
抗原信息	Recombinant fusion protein containing a sequence corresponding to amino acids 30-290 of human GTSE1 (NP_057510.4).
序列	LLADEKFDLDSLSSSSANEDDEVFFGPFHGKERCIAASLELNNPVPEQPPLPTSESPFAWSPLAGEKFVEVYKEAHLALHI ESSSRNQAAQAAPEDPRSQGVVERFIQESKLKINLFEKEKEMKKSPTSLKRETYLSDSPLLGPVGEPRLLASSPALPSSG AQARLTRAPGPPSAHALPRESCTAHAASQAATQRKPGTKLLLPRRAASVRGRSIPGAAEKPKKEIPASPSRTKIPAEKESHR DVLDPDKPAGAVNV

靶点信息

研究背景	The protein encoded by this gene is only expressed in the S and G2 phases of the cell cycle, where it colocalizes with cytoplasmic tubulin and microtubules. In response to DNA damage, the encoded protein accumulates in the nucleus and binds the tumor suppressor protein p53, shuttling it out of the nucleus and repressing its ability to induce apoptosis.
------	--

基因ID	51512
基因名	GTSE1
Swiss	Q9NYZ3
别名	GTSE1;B99

产品验证



Western blot analysis of GTSE1 expressed in Mouse spleen,Rat spleen,LO2 using GTSE1 Rabbit pAb at 1:1000. Secondary antibody: HRP Goat Anti-Rabbit IgG (H+L) at 1:5000. Lysates/proteins: 30ug per lane. Blocking buffer: 5% non-fat dry milk in TBST. Detection: ECL Enhanced Kit. Exposure time: 120s.

实验步骤

访问官网浏览详情: www.ablybio.cn