

CUEDC2 Rabbit pAb

货号: **AYP19141**

产品信息

反应	Rat
宿主	Rabbit
克隆性	Polyclonal
预测反应	
应用	WB
推荐浓度	WB: 1:500 - 1:2000
理论分子量	32kDa
实测分子量	32kDa
形式	Liquid
保存条件	Store at -20°C. Avoid freeze / thaw cycles. Buffer: PBS with 0.01% thiomersal, 50% glycerol, pH7.3.
偶联物	Unconjugated
阳性对照	Rat lung
细胞定位	Cytoplasm, Nucleus
纯化	Affinity purification

抗原信息

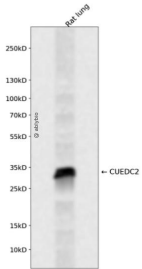
抗原信息	Recombinant fusion protein containing a sequence corresponding to amino acids 1-150 of human CUEDC 2 (NP_076945.2).
序列	MELERIVSAALLAFVQTHLPEADLSGLDEVIFSYVLGVLEDLGSPGPSEENFDMEAFTEMMEAYVPGFAHIPRGTIGDMMQ KLSGQLSDARNKENLQPQSSGVQGVPISEPLQRPEMLKEETRSSAAAAADTQDEATGAEELLPGVD

靶点信息

研究背景	Down-regulates ESR1 protein levels through the ubiquitination-proteasome pathway, regardless of the presence of 17 beta-estradiol. Also involved in 17 beta-estradiol-induced ESR1 degradation. Controls PGR protein levels through a similar mechanism.
基因ID	79004

基因名	CUEDC2
Swiss	Q9H467
别名	CUEDC2;C10orf66;bA18I14.5

产品验证



Western blot analysis of CUEDC2 expressed in Rat lung using CUEDC2 Rabbit pAb at 1:1000. Secondary antibody: HRP Goat Anti-Rabbit IgG (H+L) at 1:5000. Lysates/proteins: 30ug per lane. Blocking buffer: 5% non-fat dry milk in TBST. Detection: ECL Enhanced Kit. Exposure time: 120s.

实验步骤

访问官网浏览详情: www.ablybio.cn