

UBE2E1 Rabbit pAb

货号: **AYP19140**

产品信息

反应	Human,Mouse,Rat
宿主	Rabbit
克隆性	Polyclonal
预测反应	
应用	WB
推荐浓度	WB: 1:200 - 1:2000
理论分子量	Refer to figures
实测分子量	21kDa
形式	Liquid
保存条件	Store at -20°C. Avoid freeze / thaw cycles. Buffer: PBS with 0.01% thiomersal,50% glycerol,pH7.3.
偶联物	Unconjugated
阳性对照	HT-29,HeLa,K-562
细胞定位	Nucleus
纯化	Affinity purification

抗原信息

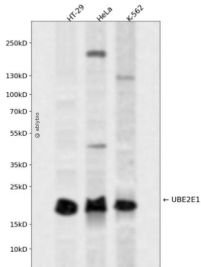
抗原信息	A synthetic peptide corresponding to a sequence within amino acids 1-50 of human UBE2E1 (NP_003332.1).
序列	MSDDDSRASTSSSSSSSNQTEKETNTPKKKESKVSMSKNSKLLSTSAK

靶点信息

研究背景	The modification of proteins with ubiquitin is an important cellular mechanism for targeting abnormal or short-lived proteins for degradation. Ubiquitination involves at least three classes of enzymes: ubiquitin-activating enzymes, or E1s, ubiquitin-conjugating enzymes, or E2s, and ubiquitin-protein ligases, or E3s. This gene encodes a member of the E2 ubiquitin-conjugating enzyme family. Three alternatively spliced transcript variants encoding distinct isoforms have been found for this gene.
基因ID	7324

基因名	UBE2E1
Swiss	P51965
别名	UBE2E1;UBCH6

产品验证



Western blot analysis of UBE2E1 expressed in HT-29, HeLa, K-562 using UBE2E1 Rabbit pAb at 1:1000. Secondary antibody: HRP Goat Anti-Rabbit IgG (H+L) at 1:5000. Lysates/proteins: 30ug per lane. Blocking buffer: 5% non-fat dry milk in TBST. Detection: ECL Enhanced Kit. Exposure time: 120s.

实验步骤

访问官网浏览详情: www.ablybio.cn