

SNAP23 Rabbit pAb

货号: **AYP19138**

产品信息

反应	Human,Mouse,Rat
宿主	Rabbit
克隆性	Polyclonal
预测反应	
应用	WB IHC
推荐浓度	WB: 1:500 - 1:2000 IHC: 1:100 - 1:200
理论分子量	17kDa/23kDa
实测分子量	23kDa
形式	Liquid
保存条件	Store at -20°C. Avoid freeze / thaw cycles. Buffer: PBS with 0.01% thiomersal,50% glycerol,pH7.3.
偶联物	Unconjugated
阳性对照	HeLa,Mouse kidney
细胞定位	Cell junction,Cell membrane,Lipid-anchor,Peripheral membrane protein,synapse,synaptosome
纯化	Affinity purification

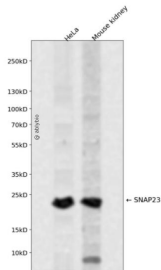
抗原信息

抗原信息	Recombinant fusion protein containing a sequence corresponding to amino acids 1-211 of human SNAP23 (NP_003816.2).
序列	MDNLSSEIIQQRRAHQITDESLESTRRILGLAIESQDAGIKTITMLDEQKEQLNRIEEGLDQINKDMRETEKTLTELNKCCGLC VPCNRTKNFESGKAYKTTWGDGGENSPCNVVSQPGPVTNGQLQQPTTGAASGGYIKRITNDAREDEMEENLTQVGS LGNLKDMLNIGNEIDAQNPQIKRITDKADTNRDRIDIANARAKKLIDS

靶点信息

研究背景	Specificity of vesicular transport is regulated, in part, by the interaction of a vesicle-associated membrane protein termed synaptobrevin/VAMP with a target compartment membrane protein termed syntaxin. These proteins, together with SNAP25 (synaptosome-associated protein of 25 kDa), form a complex which serves as a binding site for the general membrane fusion machinery. Synaptobrevin/VAMP and syntaxin are believed to be involved in vesicular transport in most, if not all cells, while SNAP25 is present almost exclusively in the brain, suggesting that a ubiquitously expressed homolog of SNAP25 exists to facilitate transport vesicle/target membrane fusion in other tissues. The protein encoded by this gene is structurally and functionally similar to SNAP25 and binds tightly to multiple syntaxins and synaptobrevins/VAMPs. It is an essential component of the high affinity receptor for the general membrane fusion machinery and is an important regulator of transport vesicle docking and fusion. Two alternative transcript variants encoding different protein isoforms have been described for this gene.
基因ID	8773
基因名	SNAP23
Swiss	O00161
别名	SNAP23;HsT17016;SNAP-23;SNAP23A;SNAP23B

产品验证



Western blot analysis of SNAP23 expressed in HeLa, Mouse kidney using SNAP23 Rabbit pAb at 1:1000. Secondary antibody: HRP Goat Anti-Rabbit IgG (H+L) at 1:5000. Lysates/proteins: 30ug per lane. Blocking buffer: 5% non-fat dry milk in TBST. Detection: ECL Enhanced Kit. Exposure time: 120s.

实验步骤

访问官网浏览详情: www.ablybio.cn