

# PLAUR Rabbit pAb

货号: **AYP19112**

## 产品信息

反应	Human,Mouse,Rat
宿主	Rabbit
克隆性	Polyclonal
预测反应	
应用	WB
推荐浓度	<b>WB:</b> 1:500 - 1:1000
理论分子量	31kDa/32kDa/36kDa
实测分子量	36-72kDa
形式	Liquid
保存条件	Store at -20°C. Avoid freeze / thaw cycles. Buffer: PBS with 0.02% sodium azide,50% glycerol,pH7.3.
偶联物	Unconjugated
阳性对照	DU145,HT-1080,A-549,HeLa,Mouse lung,Rat thymus
细胞定位	Cell membrane,Cell projection,GPI-anchor,Lipid-anchor,Secreted,invadopodium membrane
纯化	Affinity purification

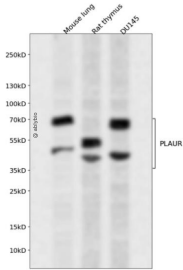
## 抗原信息

抗原信息	Recombinant fusion protein containing a sequence corresponding to amino acids 23-305 of human PLAUR (NP_002650.1).
序列	LRCMQCKTNGDCRVEECALGQDLCRTTIVRLWEEGEELELVEKSCETHSEKTNRTLSYRTGLKITSLTEVVCGLDLCNQGNS GRAVTYSRSRYLEICISGSSDMSCERGRHQSLQCRSPEEQCLDVVTHWIQEGEEGRPKDDRHLRGCGYLPGCPGSNGF HNNDTFHFLKCCNTTKCNEGPILELENLPQNGRQCYSCKGNSTHGCSSEETFLIDCRGPMNQCLVATGTHEPKNQSYMVR GCATASMCQHAHLGDAFSMNHIDVSCCTKSGCNHPDLVDVQYRSG

## 靶点信息

研究背景	This gene encodes the receptor for urokinase plasminogen activator and, given its role in localizing and promoting plasmin formation, likely influences many normal and pathological processes related to cell-surface plasminogen activation and localized degradation of the extracellular matrix. It binds both the proprotein and mature forms of urokinase plasminogen activator and permits the activation of the receptor-bound pro-enzyme by plasmin. The protein lacks transmembrane or cytoplasmic domains and may be anchored to the plasma membrane by a glycosyl-phosphatidylinositol (GPI) moiety following cleavage of the nascent polypeptide near its carboxy-terminus. However, a soluble protein is also produced in some cell types. Alternative splicing results in multiple transcript variants encoding different isoforms. The proprotein experiences several post-translational cleavage reactions that have not yet been fully defined.
基因ID	5329
基因名	PLAUR
Swiss	Q03405
别名	PLAUR;CD87;U-PAR;UPAR;URKR

## 产品验证



Western blot analysis of PLAUR expressed in Mouse lung, Rat thymus, DU145 using PLAUR Rabbit pAb at 1:1000. Secondary antibody: HRP Goat Anti-Rabbit IgG (H+L) at 1:5000. Lysates/proteins: 30ug per lane. Blocking buffer: 5% non-fat dry milk in TBST. Detection: ECL Enhanced Kit. Exposure time: 120s.

## 实验步骤

访问官网浏览详情: [www.ablybio.cn](http://www.ablybio.cn)