

LMX1B Rabbit pAb

货号: **AYP19100**

产品信息

反应	Mouse,Rat
宿主	Rabbit
克隆性	Polyclonal
预测反应	
应用	WB
推荐浓度	WB: 1:500 - 1:2000
理论分子量	44kDa/45kDa
实测分子量	44kDa/45kDa
形式	Liquid
保存条件	Store at -20°C. Avoid freeze / thaw cycles. Buffer: PBS with 0.02% sodium azide,50% glycerol,pH7.3.
偶联物	Unconjugated
阳性对照	
细胞定位	Nucleus
纯化	Affinity purification

抗原信息

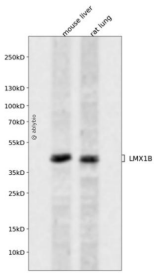
抗原信息	A synthetic peptide corresponding to a sequence within amino acids 1-100 of human LMX1B (NP_001167 618.1).
序列	MDIATGPESLERCFPRGQTDCAKMLDGIKMEEHALRPGPATLGVLLGSDCPHPAVCEGCQRPISDRFLMRVNESSWHEEC LQCAACQQALTTSCYFRDRK

靶点信息

研究背景	This gene encodes a member of LIM-homeodomain family of proteins containing two N-terminal zinc-binding LIM domains, 1 homeodomain, and a C-terminal glutamine-rich domain. It functions as a transcription factor, and is essential for the normal development of dorsal limb structures, the glomerular basement membrane, the anterior segment of the eye, and dopaminergic and serotonergic neurons. Mutations in this gene are associated with nail-patella syndrome. Alternatively spliced transcript variants encoding different isoforms have been found for this gene.
------	---

基因ID	4010
基因名	LMX1B
Swiss	O60663
别名	LMX1B;LMX1.2;NPS1

产品验证



Western blot analysis of LMX1B expressed in mouse liver, rat lung using LMX1B Rabbit pAb at 1:1000. Secondary antibody: HRP Goat Anti-Rabbit IgG (H+L) at 1:5000. Lysates/proteins: 30ug per lane. Blocking buffer: 5% non-fat dry milk in TBST. Detection: ECL Enhanced Kit. Exposure time: 120s.

实验步骤

访问官网浏览详情: www.ablybio.cn