

PPL Rabbit pAb

货号: **AYP19087**

产品信息

反应	Human,Mouse,Rat
宿主	Rabbit
克隆性	Polyclonal
预测反应	
应用	WB IF/ICC
推荐浓度	WB: 1:500 - 1:2000 IF/ICC: 1:100 - 1:500
理论分子量	204kDa
实测分子量	205kDa
形式	Liquid
保存条件	Store at -20°C. Avoid freeze / thaw cycles. Buffer: PBS with 0.02% sodium azide,50% glycerol,pH7.3.
偶联物	Unconjugated
阳性对照	Mouse lung,Mouse heart
细胞定位	Cell junction,Cell membrane,Cytoplasm,Mitochondrion,Nucleus,cytoskeleton,desmosome
纯化	Affinity purification

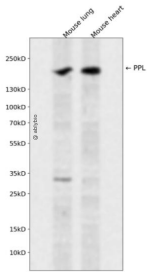
抗原信息

抗原信息	Recombinant fusion protein containing a sequence corresponding to amino acids 1-130 of human PPL (NP_002696.3).
序列	MNSLFRKRKNGKYSPTVQTRSISNKESELIEQLQKNADQVEKNIVDTEAKMQSDLARLQEGRQPEHRDVTLQKVL DSEKLLYVLEADAAIAKHKHPQGD MIAEDIRQLKERV TNLRGKHKQIYRLAVK

靶点信息

研究背景	The protein encoded by this gene is a component of desmosomes and of the epidermal cornified envelope in keratinocytes. The N-terminal domain of this protein interacts with the plasma membrane and its C-terminus interacts with intermediate filaments. Through its rod domain, this protein forms complexes with envoplakin. This protein may serve as a link between the cornified envelope and desmosomes as well as intermediate filaments. AKT1/PKB, a protein kinase mediating a variety of cell growth and survival signaling processes, is reported to interact with this protein, suggesting a possible role for this protein as a localization signal in AKT1-mediated signaling.
基因ID	5493
基因名	PPL
Swiss	O60437
别名	PPL

产品验证



Western blot analysis of PPL expressed in Mouse lung, Mouse heart using PPL Rabbit pAb at 1:1000. Secondary antibody: HRP Goat Anti-Rabbit IgG (H+L) at 1:5000. Lysates/proteins: 30ug per lane. Blocking buffer: 5% non-fat dry milk in TBST. Detection: ECL Enhanced Kit. Exposure time: 120s.

实验步骤

访问官网浏览详情: www.ablybio.cn