

PSMA5 Rabbit pAb

货号: **AYP19086**

产品信息

反应	Human,Mouse,Rat
宿主	Rabbit
克隆性	Polyclonal
预测反应	
应用	WB IP
推荐浓度	WB: 1:500 - 1:2000 IP: 1:500 - 1:1000
理论分子量	20kDa/26kDa
实测分子量	26kDa
形式	Liquid
保存条件	Store at -20°C. Avoid freeze / thaw cycles. Buffer: PBS with 0.02% sodium azide,50% glycerol,pH7.3.
偶联物	Unconjugated
阳性对照	MCF7,293T,HepG2,U-251MG,BxPC-3,Mouse liver,Mouse thymus,Mouse heart
细胞定位	Cytoplasm,Nucleus
纯化	Affinity purification

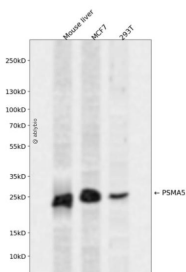
抗原信息

抗原信息	Recombinant fusion protein containing a sequence corresponding to amino acids 1-241 of human PSMA5 (NP_002781.2).
序列	MFLTRSEYDRGVNTFSPEGRLFQVEYAIEAIKLGSTAIGTSEGVCLAVEKRITSPLMPESSIEKIVEIDAHIGCAMGLIADA KTLIDKARVETQNHWFYNETMTVESVTQAVSNLALQFGEEDADPGAMSRPFGVALLFGGVDEKGPQLFHMDPSGTFV QCDARAIGSASEGAQSSLQEVYHKSMTLKEAIKSSLILKQVMEEKLNATNIELATVQPQGNFHMFTKEELEEVIKDI

靶点信息

研究背景	The proteasome is a multicatalytic proteinase complex with a highly ordered ring-shaped 20S core structure. The core structure is composed of 4 rings of 28 non-identical subunits; 2 rings are composed of 7 alpha subunits and 2 rings are composed of 7 beta subunits. Proteasomes are distributed throughout eukaryotic cells at a high concentration and cleave peptides in an ATP/ubiquitin-dependent process in a non-lysosomal pathway. An essential function of a modified proteasome, the immunoproteasome, is the processing of class I MHC peptides. This gene encodes a member of the peptidase T1A family, that is a 20S core alpha subunit. Multiple alternatively spliced transcript variants encoding two distinct isoforms have been found for this gene.
基因ID	5686
基因名	PSMA5
Swiss	P28066
别名	PSMA5;PSC5;ZETA

产品验证



Western blot analysis of PSMA5 expressed in Mouse liver, MCF7, 293T using PSMA5 Rabbit pAb at 1:1000. Secondary antibody: HRP Goat Anti-Rabbit IgG (H+L) at 1:5000. Lysates/proteins: 30ug per lane. Blocking buffer: 5% non-fat dry milk in TBST. Detection: ECL Enhanced Kit. Exposure time: 120s.

实验步骤

访问官网浏览详情: www.ablybio.cn