

AIPL1 Rabbit pAb

货号: **AYP19072**

产品信息

反应	Human,Mouse,Rat
宿主	Rabbit
克隆性	Polyclonal
预测反应	
应用	WB IF/ICC
推荐浓度	WB: 1:500 - 1:2000 IF/ICC: 1:50 - 1:200
理论分子量	36kDa/40kDa/41kDa/43kDa
实测分子量	40-55kDa
形式	Liquid
保存条件	Store at -20°C. Avoid freeze / thaw cycles. Buffer: PBS with 0.02% sodium azide,50% glycerol,pH7.3.
偶联物	Unconjugated
阳性对照	U-937,Mouse liver,Mouse heart,Rat liver,Rat brain
细胞定位	Cytoplasm,Nucleus
纯化	Affinity purification

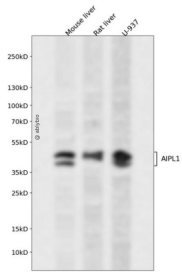
抗原信息

抗原信息	Recombinant fusion protein containing a sequence corresponding to amino acids 1-384 of human AIPL1 (NP_055151.3).
序列	MDAALLNVEGVKKTILHGGTGELPNFITGSRVIFHFRTMKCDEERTVIDDSRQVGPMPHIIIIGNMFKLEVWEILLTSMRVH EVAEFWCDTIHTGVYPILSRSLRQMAQGDPTTEWHVHTCGLANMFAYHTLGYEDLDELQKEPQPLVFVIELLQVDAPSDY QRETWNLSNHEKMKAVPVLHGEGRNLFKLGRYEEASSKYQEAIICLRNLQTKPKWEVQWLKLEKMINTLILNYCQCLLKKE EYYEVLEHTSDILRHHPGIVKAYVVRARAHAEVWNEAEAKADLQKVLELEPSMQKAVRRELRLLENRMAEKQEEERLRCRN MLSQGATQPPAEPPTPEPPAQSSTEPPAEPPTAPSAELSAEPPAEPATEPPPSPGHSLQH

靶点信息

研究背景	Leber congenital amaurosis (LCA) is the most severe inherited retinopathy with the earliest age of onset and accounts for at least 5% of all inherited retinal diseases. Affected individuals are diagnosed at birth or in the first few months of life with nystagmus, severely impaired vision or blindness and an abnormal or flat electroretinogram. The photoreceptor/pineal-expressed gene, AIPL1, encoding aryl-hydrocarbon interacting protein-like 1, is located within the LCA4 candidate region. The encoded protein contains three tetratricopeptide motifs, consistent with chaperone or nuclear transport activity. Mutations in this gene may cause approximately 20% of recessive LCA. Alternative splicing results in multiple transcript variants.
基因ID	23746
基因名	AIPL1
Swiss	Q9NZN9
别名	AIPL1;AIPL2;LCA4

产品验证



Western blot analysis of AIPL1 expressed in Mouse liver,Rat liver,U-937 using AIPL1 Rabbit pAb at 1:1000. Secondary antibody: HRP Goat Anti-Rabbit IgG (H+L) at 1:5000. Lysates/proteins: 30ug per lane. Blocking buffer: 5% non-fat dry milk in TBST. Detection: ECL Enhanced Kit. Exposure time: 120s.

实验步骤

访问官网浏览详情: www.ablybio.cn