

EHF Rabbit pAb

货号: **AYP19071**

产品信息

反应	Mouse
宿主	Rabbit
克隆性	Polyclonal
预测反应	
应用	WB
推荐浓度	WB: 1:500 - 1:2000
理论分子量	32kDa/34kDa/37kDa
实测分子量	35kDa
形式	Liquid
保存条件	Store at -20°C. Avoid freeze / thaw cycles. Buffer: PBS with 0.02% sodium azide,50% glycerol,pH7.3.
偶联物	Unconjugated
阳性对照	Mouse lung
细胞定位	Nucleus
纯化	Affinity purification

抗原信息

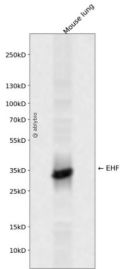
抗原信息	Recombinant fusion protein containing a sequence corresponding to amino acids 1-210 of human EHF (NP_036285.2).
序列	MILEGGVMNLPNGNLLHQPPAWTDSYSTCNVSSGFFGGQWHEIHPQYWTKYQVWEWLQHLLDTNQLDANCIPFQEFDINGEHLCSMSLQEFTRAAGTAGQLLYSNLQHLKWNGQCSSDLFQSTHNVIVKTEQTEPSIMNTWKDENLYDTNYGSTVDLLDSKTCRAQISMSTTTSHLPVAESPDMKKEQDPPAKCHTKKHNPGRGTHLW

靶点信息

研究背景	This gene encodes a protein that belongs to an ETS transcription factor subfamily characterized by epithelial-specific expression (ESEs). The encoded protein acts as a transcriptional repressor and may be involved in epithelial differentiation and carcinogenesis. Three transcript variants encoding different isoforms have been found for this gene.
基因ID	26298

基因名	EHF
Swiss	Q9NZC4
别名	EHF;ESE3;ESE3B;ESEJ

产品验证



Western blot analysis of EHF expressed in Mouse lung using EHF Rabbit pAb at 1:1000. Secondary antibody: HRP Goat Anti-Rabbit IgG (H+L) at 1:5000. Lysates/proteins: 30ug per lane. Blocking buffer: 5% non-fat dry milk in TBST. Detection: ECL Enhanced Kit. Exposure time: 120s.

实验步骤

访问官网浏览详情: www.ablybio.cn