

HLA-E Rabbit pAb

货号: **AYP19049**

产品信息

反应	Human,Mouse,Rat
宿主	Rabbit
克隆性	Polyclonal
预测反应	
应用	WB
推荐浓度	WB: 1:500 - 1:2000
理论分子量	40kDa
实测分子量	50kDa
形式	Liquid
保存条件	Store at -20°C. Avoid freeze / thaw cycles. Buffer: PBS with 0.02% sodium azide,50% glycerol,pH7.3.
偶联物	Unconjugated
阳性对照	HL-60,SKOV3,Mouse liver,Rat liver
细胞定位	Membrane,Single-pass type I membrane protein
纯化	Affinity purification

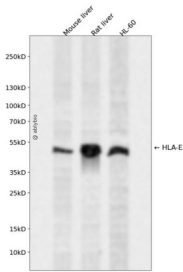
抗原信息

抗原信息	Recombinant fusion protein containing a sequence corresponding to amino acids 22-200 of human HLA-E (NP_005507.3).
序列	GSHSLKYFHTSVSRPGRGEPFRFISVGYVDDTQFVRFDNDAA SPRMVPRAPWMEQEGSEYWDRETRSARDTAQIFRVNL RTLRYGYYNQSEAGSHTLQWMHGCELGPDGRFLRGYEQFAYDGDYLTNEDLRSWTAVDTAAQISEQKSNDASEAEHQ RAYLEDTCVEWLHKYLEKGKETL

靶点信息

研究背景	HLA-E belongs to the HLA class I heavy chain paralogues. This class I molecule is a heterodimer consisting of a heavy chain and a light chain (beta-2 microglobulin). The heavy chain is anchored in the membrane. HLA-E binds a restricted subset of peptides derived from the leader peptides of other class I molecules. The heavy chain is approximately 45 kDa and its gene contains 8 exons. Exon one encodes the leader peptide, exons 2 and 3 encode the alpha1 and alpha2 domains, which both bind the peptide, exon 4 encodes the alpha3 domain, exon 5 encodes the transmembrane region, and exons 6 and 7 encode the cytoplasmic tail.
基因ID	3133
基因名	HLA-E
Swiss	P13747
别名	HLA-6.2;QA1;HLA-E;EA1.2;EA2.1

产品验证



Western blot analysis of HLA-E expressed in Mouse liver,Rat liver,HL-60 using HLA-E Rabbit pAb at 1:1000. Secondary antibody: HRP Goat Anti-Rabbit IgG (H+L) at 1:5000. Lysates/proteins: 30ug per lane. Blocking buffer: 5% non-fat dry milk in TBST. Detection: ECL Enhanced Kit. Exposure time: 120s.

实验步骤

访问官网浏览详情: www.ablybio.cn