

SLC6A2 Rabbit pAb

货号: **AYP19047**

产品信息

反应	Human,Mouse,Rat
宿主	Rabbit
克隆性	Polyclonal
预测反应	
应用	WB
推荐浓度	WB: 1:500 - 1:1000
理论分子量	57kDa/69kDa/70kDa
实测分子量	80KDa
形式	Liquid
保存条件	Store at -20°C. Avoid freeze / thaw cycles. Buffer: PBS with 0.05% proclin300,50% glycerol,pH7.3.
偶联物	Unconjugated
阳性对照	Mouse brain,Rat brain
细胞定位	Membrane,Multi-pass membrane protein
纯化	Affinity purification

抗原信息

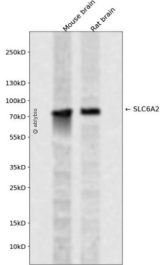
抗原信息	Recombinant fusion protein containing a sequence corresponding to amino acids 1-70 of human SLC6A2 (NP_001165975.1).
序列	MLLARMNPQVQPENNGADTGPEQPLRARKTAELLVVKERNGVQCLLAPRDGDAQPRETWGKKIDFLLSVV

靶点信息

研究背景	This gene encodes a member of the sodium:neurotransmitter symporter family. This member is a multi-pass membrane protein, which is responsible for reuptake of norepinephrine into presynaptic nerve terminals and is a regulator of norepinephrine homeostasis. Mutations in this gene cause orthostatic intolerance, a syndrome characterized by lightheadedness, fatigue, altered mentation and syncope. Alternatively spliced transcript variants encoding different isoforms have been identified in this gene.
基因ID	6530

基因名	SLC6A2
Swiss	P23975
别名	SLC6A2;NAT1;NET;NET1;SLC6A5

产品验证



Western blot analysis of SLC6A2 expressed in Mouse brain,Rat brain using SLC6A2 Rabbit pAb at 1:1000. Secondary antibody: HRP Goat Anti-Rabbit IgG (H+L) at 1:5000. Lysates/proteins: 30ug per lane. Blocking buffer: 5% non-fat dry milk in TBST. Detection: ECL Enhanced Kit. Exposure time: 120s.

实验步骤

访问官网浏览详情: www.ablybio.cn