

OMA1 Rabbit pAb

货号: **AYP19035**

产品信息

反应	Human,Mouse,Rat
宿主	Rabbit
克隆性	Polyclonal
预测反应	
应用	WB IF/ICC
推荐浓度	WB: 1:500 - 1:2000 IF/ICC: 1:50 - 1:100
理论分子量	60kDa/55kDa
实测分子量	37kDa
形式	Liquid
保存条件	Store at -20°C. Avoid freeze / thaw cycles. Buffer: PBS with 0.01% thiomersal,50% glycerol,pH7.3.
偶联物	Unconjugated
阳性对照	293T,LO2,K-562
细胞定位	Mitochondrion inner membrane,Multi-pass membrane protein
纯化	Affinity purification

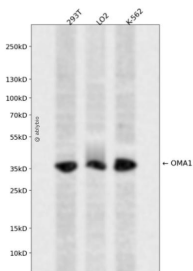
抗原信息

抗原信息	Recombinant fusion protein containing a sequence corresponding to amino acids 360-524 of human OMA 1 (NP_660286.1).
序列	AICPRDSLALLCQWIQSKLQEYMFNRPYSRKLEAEADKIGLLLAACADIRASSVFWQQMEFVDSLHGQPKMPEWLSTH PSHGNRVEYLDRLIPQALKIREMCNCPPLSNPDRLLFKLSTKHFLEESEKEDLNITKKQKMDTLPIQKQEQIPLTYIVEKRTG S

靶点信息

研究背景	Metalloprotease that is part of the quality control system in the inner membrane of mitochondria. Activated in response to various mitochondrial stress, leading to the proteolytic cleavage of target proteins, such as OPA1, UQC3 and DELE1. Following stress conditions that induce loss of mitochondrial membrane potential, mediates cleavage of OPA1 at S1 position, leading to OPA1 inactivation and negative regulation of mitochondrial fusion. Also acts as a regulator of apoptosis: upon BAK and BAX aggregation, mediates cleavage of OPA1, leading to the remodeling of mitochondrial cristae and allowing the release of cytochrome c from mitochondrial cristae. In depolarized mitochondria, may also act as a backup protease for PINK1 by mediating PINK1 cleavage and promoting its subsequent degradation by the proteasome. May also cleave UQC3 in response to mitochondrial depolarization. Also acts as an activator of the integrated stress response (ISR: in response to mitochondrial stress, mediates cleavage of DELE1 to generate the processed form of DELE1 (S-DELE1, which translocates to the cytosol and activates EIF2AK1/HRI to trigger the ISR. Its role in mitochondrial quality control is essential for regulating lipid metabolism as well as to maintain body temperature and energy expenditure under cold-stress conditions (By similarity. Binds cardiolipin, possibly regulating its protein turnover (By similarity. Required for the stability of the respiratory supercomplexes (By similarity).
基因ID	115209
基因名	OMA1
Swiss	Q96E52
别名	OMA1;2010001O09Rik;DAB1;MPRP-1;MPRP1;YKR087C;ZMPOMA1;peptidase

产品验证



Western blot analysis of OMA1 expressed in 293T, LO2, K-562 using OMA1 Rabbit pAb at 1:1000. Secondary antibody: HRP Goat Anti-Rabbit IgG (H+L) at 1:5000. Lysates/proteins: 30ug per lane. Blocking buffer: 5% non-fat dry milk in TBST. Detection: ECL Enhanced Kit. Exposure time: 120s.

实验步骤

访问官网浏览详情: www.ablybio.cn