

GUCY2F Rabbit pAb

货号: **AYP19034**

产品信息

反应	Mouse,Rat
宿主	Rabbit
克隆性	Polyclonal
预测反应	
应用	WB IF/ICC
推荐浓度	WB: 1:500 - 1:2000 IF/ICC: 1:50 - 1:100
理论分子量	124kDa
实测分子量	125kDa
形式	Liquid
保存条件	Store at -20°C. Avoid freeze / thaw cycles. Buffer: PBS with 0.01% thiomersal,50% glycerol,pH7.3.
偶联物	Unconjugated
阳性对照	Mouse eye
细胞定位	Membrane,Single-pass type I membrane protein
纯化	Affinity purification

抗原信息

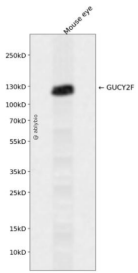
抗原信息	Recombinant fusion protein containing a sequence corresponding to amino acids 250-460 of human GUC Y2F (NP_001513.2).
序列	HSALIGGETQMHLLCAHDLKMTDGTIVFVFPYDALLYSLPYKHPTPYRVLRRNNPKLREAYDAVLTITVESQEKTIFYQAFTEAA ARGEIPEKLEFDQVSPLFGTIYNSIYFIAQAMNNAMKENGQAGAASLVQHSRNMQFHGFNQLMRTDSNGNGISEYVILDT NLKEWELHSTYTVDMEMELLRFGGTPIHFPGGRPPRADA KCWFAEGKIC

靶点信息

研究背景	The protein encoded by this gene is a guanylyl cyclase found predominantly in photoreceptors in the retina. The encoded protein is thought to be involved in resynthesis of cGMP after light activation of the visual signal transduction cascade, allowing a return to the dark state. This protein is a single-pass type I membrane protein. Defects in this gene may be a cause of X-linked retinitis pigmentosa.
------	--

基因ID	2986
基因名	GUCY2F
Swiss	P51841
别名	GUCY2F;CYGF;GC-F;GUC2DL;GUC2F;RETGC-2;ROS-GC2

产品验证



Western blot analysis of GUCY2F expressed in Mouse eye using GUCY2F Rabbit pAb at 1:1000. Secondary antibody: HRP Goat Anti-Rabbit IgG (H+L) at 1:5000. Lysates/proteins: 30ug per lane. Blocking buffer: 5% non-fat dry milk in TBST. Detection: ECL Enhanced Kit. Exposure time: 120s.

实验步骤

访问官网浏览详情: www.ablybio.cn