

ADH1B Rabbit pAb

货号: **AYP19000**

产品信息

反应	Rat
宿主	Rabbit
克隆性	Polyclonal
预测反应	
应用	WB
推荐浓度	WB: 1:500 - 1:2000
理论分子量	35kDa/39kDa
实测分子量	40kDa
形式	Liquid
保存条件	Store at -20°C. Avoid freeze / thaw cycles. Buffer: PBS with 0.02% sodium azide, 50% glycerol, pH7.3.
偶联物	Unconjugated
阳性对照	Rat liver
细胞定位	Cytoplasm
纯化	Affinity purification

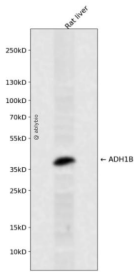
抗原信息

抗原信息	Recombinant fusion protein containing a sequence corresponding to amino acids 206-375 of human ADH 1B (NP_000659.2).
序列	LSAVMGCKAAGAARIIVDINKDKFAKAKELGATECINPQDYKKPIQEVVKEMTDGGVDFSFVIGRLDTMMASLLCCHEA CGTSVIVGVPPASQNLNINPMLLLTGRTWKGAVYGGFKSKEGIPKLVADFMKKFSLDALITHVLPFEKINEGFDLLHSGKSI RTVLTF

靶点信息

研究背景	The protein encoded by this gene is a member of the alcohol dehydrogenase family. Members of this enzyme family metabolize a wide variety of substrates, including ethanol, retinol, other aliphatic alcohols, hydroxysteroids, and lipid peroxidation products. This encoded protein, consisting of several homo- and heterodimers of alpha, beta, and gamma subunits, exhibits high activity for ethanol oxidation and plays a major role in ethanol catabolism. Three genes encoding alpha, beta and gamma subunits are tandemly organized in a genomic segment as a gene cluster. Two transcript variants encoding different isoforms have been found for this gene.
基因ID	125
基因名	ADH1B
Swiss	P00325
别名	ADH1B;ADH2;HEL-S-117

产品验证



Western blot analysis of ADH1B expressed in Rat liver using ADH1B Rabbit pAb at 1:1000. Secondary antibody: HRP Goat Anti-Rabbit IgG (H+L) at 1:5000. Lysates/proteins: 30ug per lane. Blocking buffer: 5% non-fat dry milk in TBST. Detection: ECL Enhanced Kit. Exposure time: 120s.

实验步骤

访问官网浏览详情: www.ablybio.cn