

WBSCR16 Rabbit pAb

货号: **AYP18995**

产品信息

反应	Human,Mouse,Rat
宿主	Rabbit
克隆性	Polyclonal
预测反应	
应用	WB
推荐浓度	WB: 1:500 - 1:2000
理论分子量	38kDa/48kDa/49kDa
实测分子量	50kDa
形式	Liquid
保存条件	Store at -20°C. Avoid freeze / thaw cycles. Buffer: PBS with 0.01% thiomersal,50% glycerol,pH7.3.
偶联物	Unconjugated
阳性对照	Raji,HeLa,LO2,Mouse liver,Rat liver
细胞定位	mitochondrial inner membrane,mitochondrial membrane
纯化	Affinity purification

抗原信息

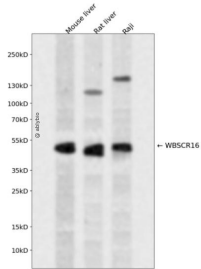
抗原信息	Recombinant fusion protein containing a sequence corresponding to amino acids 1-230 of human WBSCR 16 (NP_110425.2).
序列	MALVALVAGARLGRRLSGPGLGRGHWTAAGRSRSRREAAEAEVPPVQYVGERAARADRVFVWGFSGALGVPSFV VPSSGPGPRAGARPRRRIQVPYRLELDQKISSAACGYGFTLLSSKTADVTKVWGMGLNKDSQLGFHRSRKDKTRGYEY VLEPSPVSLPLDRPQETRVLQVSCGRAHSLVLTDRGVFSMGNNSYQCGRKVVENEIYSESHRVHRMQDFDG

靶点信息

研究背景	This gene encodes a protein containing regulator of chromosome condensation 1-like repeats. The encoded protein may function as a guanine nucleotide exchange factor. This gene is located in a region of chromosome 7 that is deleted in Williams-Beuren syndrome, a multisystem developmental disorder. Alternative splicing results in multiple transcript variants.
基因ID	81554

基因名	RCC1L
Swiss	Q96I51
别名	RCC1L;WBSCR16;RCC1 like

产品验证



Western blot analysis of WBSCR16 expressed in Mouse liver, Rat liver, Raji using WBSCR16 Rabbit pAb at 1:1000. Secondary antibody: HRP Goat Anti-Rabbit IgG (H+L) at 1:5000. Lysates/proteins: 30ug per lane. Blocking buffer: 5% non-fat dry milk in TBST. Detection: ECL Enhanced Kit. Exposure time: 120s.

实验步骤

访问官网浏览详情: www.ablybio.cn