

YPEL5 Rabbit pAb

货号: **AYP18994**

产品信息

反应	Human,Mouse,Rat
宿主	Rabbit
克隆性	Polyclonal
预测反应	
应用	WB
推荐浓度	WB: 1:500 - 1:2000
理论分子量	13kDa
实测分子量	14kDa
形式	Liquid
保存条件	Store at -20°C. Avoid freeze / thaw cycles. Buffer: PBS with 0.01% thiomersal,50% glycerol,pH7.3.
偶联物	Unconjugated
阳性对照	HeLa,HT-29,U-87MG,Mouse brain,Mouse lung,Mouse testis,Rat brain,Rat lung,Rat testis
细胞定位	extracellular region,microtubule organizing center,mitotic spindle pole,nucleus
纯化	Affinity purification

抗原信息

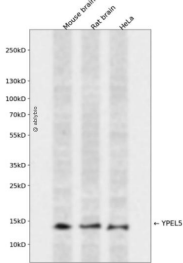
抗原信息	Recombinant fusion protein containing a sequence corresponding to amino acids 1-121 of human YPEL5 (NP_057145.1).
序列	MGRIFLDHIGGTRLFSCANCDTILTNRSELISTRFTGATGRAFLFNKVVNLQYSEVQDRVMLTGRHMRDVSCKNCSKLGWIYEFATEDSQRYKEGRVILERALVRESEGFEEHVPSDNS

靶点信息

研究背景	Component of the CTLH E3 ubiquitin-protein ligase complex that selectively accepts ubiquitin from UBE2H and mediates ubiquitination and subsequent proteasomal degradation of the transcription factor HBP1. Required for normal cell proliferation (By similarity).
基因ID	51646

基因名	YPEL5
Swiss	P62699
别名	YPEL5;CGI-127

产品验证



Western blot analysis of YPEL5 expressed in Mouse brain,Rat brain,HeLa using YPEL5 Rabbit pAb at 1:1 000. Secondary antibody: HRP Goat Anti-Rabbit IgG (H+L) at 1:5000. Lysates/proteins: 30ug per lane. B locking buffer: 5% non-fat dry milk in TBST. Detection: ECL Enhanced Kit. Exposure time: 120s.

实验步骤

访问官网浏览详情: www.ablybio.cn