

RHBDD1 Rabbit pAb

货号: **AYP18984**

产品信息

反应	Human,Mouse,Rat
宿主	Rabbit
克隆性	Polyclonal
预测反应	
应用	WB IF/ICC
推荐浓度	WB: 1:500 - 1:2000 IF/ICC: 1:50 - 1:100
理论分子量	12kDa/35kDa
实测分子量	35kDa
形式	Liquid
保存条件	Store at -20°C. Avoid freeze / thaw cycles. Buffer: PBS with 0.01% thiomersal,50% glycerol,pH7.3.
偶联物	Unconjugated
阳性对照	U-87MG,BxPC-3,Raji,mouse brain,mouse kidney,rat brain
细胞定位	Endoplasmic reticulum membrane,Membrane,Mitochondrion,Multi-pass membrane protein
纯化	Affinity purification

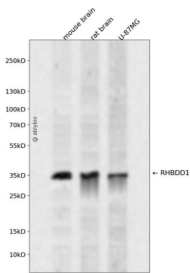
抗原信息

抗原信息	Recombinant fusion protein containing a sequence corresponding to amino acids 206-315 of human RHB DD1 (NP_115652.2).
序列	TQGPLKKIMEACAGGFSSSVGYPGRQYYFNSSGSSGYQDYYPHGRPDHYEEAPRNYDITYTAGLSEEEQLERALQASLWDRGNTRNSPPPYGFHLSPEEMRRQRLHRFDSQ

靶点信息

研究背景	Intramembrane-cleaving serine protease that cleaves single transmembrane or multi-pass membrane proteins in the hydrophobic plane of the membrane, luminal loops and juxtamembrane regions. Involved in regulated intramembrane proteolysis and the subsequent release of functional polypeptides from their membrane anchors. Functional component of endoplasmic reticulum-associated degradation (ERAD for misfolded membrane proteins. Required for the degradation process of some specific misfolded endoplasmic reticulum (ER luminal proteins. Participates in the transfer of misfolded proteins from the ER to the cytosol, where they are destroyed by the proteasome in a ubiquitin-dependent manner. Functions in BIK, MPZ, PDK1, PTCRA, RHO, STEAP3 and TRAC processing. Involved in the regulation of exosomal secretion; inhibits the TSAP6-mediated secretion pathway. Involved in the regulation of apoptosis; modulates BIK-mediated apoptotic activity. Also plays a role in the regulation of spermatogenesis; inhibits apoptotic activity in spermatogonia.
基因ID	84236
基因名	RHBDD1
Swiss	Q8TEB9
别名	RHBDD1;RRP4

产品验证



Western blot analysis of RHBDD1 expressed in mouse brain, rat brain, U-87MG using RHBDD1 Rabbit pAb at 1:1000. Secondary antibody: HRP Goat Anti-Rabbit IgG (H+L) at 1:5000. Lysates/proteins: 30ug per lane. Blocking buffer: 5% non-fat dry milk in TBST. Detection: ECL Enhanced Kit. Exposure time: 120 S.

实验步骤

访问官网浏览详情: www.ablybio.cn