

SLC25A23 Rabbit pAb

货号: **AYP18981**

产品信息

反应	Human,Mouse,Rat
宿主	Rabbit
克隆性	Polyclonal
预测反应	
应用	WB IF/ICC
推荐浓度	WB: 1:500 - 1:2000 IF/ICC: 1:50 - 1:200
理论分子量	48kDa/49kDa/52kDa/54kDa
实测分子量	52kDa
形式	Liquid
保存条件	Store at -20°C. Avoid freeze / thaw cycles. Buffer: PBS with 0.01% thiomersal,50% glycerol,pH7.3.
偶联物	Unconjugated
阳性对照	HeLa,293T,Mouse pancreas,Mouse testis,Mouse brain,Mouse kidney,Rat testis,Rat brain
细胞定位	Mitochondrion inner membrane,Multi-pass membrane protein
纯化	Affinity purification

抗原信息

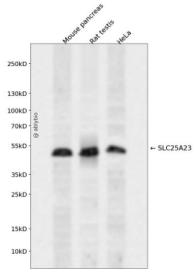
抗原信息	Recombinant fusion protein containing a sequence corresponding to amino acids 1-160 of human SLC25A23 (NP_077008.2).
序列	MRGSPGDAERRQRWGRLEFEELDSNKDGRVDVHELRLQGLARLGGNPDPGAQQGISSEGADDPDGGDLLEEFSTRYLQEREQRLLLMFHSLDRNQDGHIDVSEIQQSFRALGISISLEQAELKILHSMRDGTMIDWQEWDRDHFLLHSLNVEDVLYFWKHS

靶点信息

研究背景	SLC25A23 (solute carrier family 25 (mitochondrial carrier; phosphate carrier), member 23) is a protein-coding gene. GO annotations related to this gene include calcium ion binding. An important paralog of this gene is SLC25A24.
基因ID	79085

基因名	SLC25A23
Swiss	Q9BV35
别名	SLC25A23;APC2;MCSC2;SCaMC-3

产品验证



Western blot analysis of SLC25A23 expressed in Mouse pancreas,Rat testis,HeLa using SLC25A23 Rabbit pAb at 1:1000. Secondary antibody: HRP Goat Anti-Rabbit IgG (H+L) at 1:5000. Lysates/proteins: 30 ug per lane. Blocking buffer: 5% non-fat dry milk in TBST. Detection: ECL Enhanced Kit. Exposure time: 120s.

实验步骤

访问官网浏览详情: www.ablybio.cn