

# NME6 Rabbit pAb

货号: **AYP18971**

## 产品信息

反应	Human,Mouse,Rat
宿主	Rabbit
克隆性	Polyclonal
预测反应	
应用	WB IHC IF/ICC
推荐浓度	<b>WB:</b> 1:500 - 1:2000 <b>IHC:</b> 1:50 - 1:100 <b>IF/ICC:</b> 1:50 - 1:100
理论分子量	13kDa/18kDa/21kDa
实测分子量	21kDa
形式	Liquid
保存条件	Store at -20°C. Avoid freeze / thaw cycles. Buffer: PBS with 0.01% thiomersal,50% glycerol,pH7.3.
偶联物	Unconjugated
阳性对照	Mouse heart,Mouse liver,Rat liver
细胞定位	mitochondrion
纯化	Affinity purification

## 抗原信息

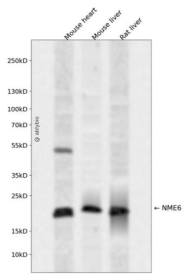
抗原信息	Recombinant fusion protein containing a sequence corresponding to amino acids 9-194 of human NME6 ( NP_005784.1).
序列	MASILRSPQALQLTLALIKPDAVAHPLILEAVHQILSNKFLIVRMRELLWRKEDCQRFYREHEGRFFYQRLVEFMASGPIRA YILAHKDAIQLWRTLGMGPTRVFRARHVAPDSIRGSFGLTDTRNTTHGSDSVVSASREIAAFFPDFSEQRWYEEEEEPQLRGC PVCYSPEGGVHYVAGTGGLGPA

## 靶点信息

研究背景	Nucleoside diphosphate (NDP) kinases (EC 2.7.4.6), such as NME6, are ubiquitous enzymes that catalyze transfer of gamma-phosphates, via a phosphohistidine intermediate, between nucleoside and dioxynucleoside tri- and diphosphates (Mehus et al., 1999 [PubMed 10453732]).[supplied by OMIM, Jul 2010]
------	---

基因ID	10201
基因名	NME6
Swiss	O75414
别名	NME6;IPIA-ALPHA;NDK 6;NM23-H6;NDK6

## 产品验证



Western blot analysis of NME6 expressed in Mouse heart, Mouse liver, Rat liver using NME6 Rabbit pAb at 1:1000. Secondary antibody: HRP Goat Anti-Rabbit IgG (H+L) at 1:5000. Lysates/proteins: 30ug per lane. Blocking buffer: 5% non-fat dry milk in TBST. Detection: ECL Enhanced Kit. Exposure time: 120s.

## 实验步骤

访问官网浏览详情: [www.ablybio.cn](http://www.ablybio.cn)