

# GPD1L Rabbit pAb

货号: **AYP18968**

## 产品信息

反应	Human,Mouse
宿主	Rabbit
克隆性	Polyclonal
预测反应	
应用	WB
推荐浓度	<b>WB:</b> 1:500 - 1:2000
理论分子量	38kDa
实测分子量	38kDa
形式	Liquid
保存条件	Store at -20°C. Avoid freeze / thaw cycles. Buffer: PBS with 0.01% thiomersal,50% glycerol,pH7.3.
偶联物	Unconjugated
阳性对照	293T,A-549,U-87MG,Mouse stomach,Mouse thymus,Mouse brain,Mouse heart
细胞定位	Cytoplasm
纯化	Affinity purification

## 抗原信息

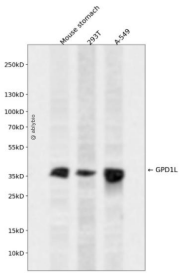
抗原信息	Recombinant fusion protein containing a sequence corresponding to amino acids 1-351 of human GPD1L (NP_055956.1).
序列	MAAAPLKVCIVGSGNWGS AVAKIIGNNVK LQKFASTVKM WVFEETVNGRKLTDIINNDHENVKYLPGHKLPENVVAMSNLSEAVQDADLLV FVIPHQFIHRICDEITGRVPPKALGITLIKIDEGPEGLK LISDIIREKMGIDISVLMGANIANEVAAEKFCETTIGSKVMENGLLFKELLQTPNFRITVVDDADTVELCGALKNIVAVGAGFCDGLRCGDNTKAAVIRLGLMEMIAFARIFCKGQVSTATFLESCGVADLITTCYGRNRRVAEAFARTGKTIEELEKEMLNQKLGQPQTSAEVYRILKQKGLLDKFLFTAVYQICYESRPVQEMLSCLQSHPEHT

## 靶点信息

研究背景	The protein encoded by this gene catalyzes the conversion of sn-glycerol 3-phosphate to glycerone phosphate. The encoded protein is found in the cytoplasm, associated with the plasma membrane, where it binds the sodium channel, voltage-gated, type V, alpha subunit (SCN5A). Defects in this gene are a cause of Brugada syndrome type 2 (BRS2) as well as sudden infant death syndrome (SIDS).
------	--

基因ID	23171
基因名	GPD1L
Swiss	Q8N335
别名	GPD1L;GPD1-L

## 产品验证



Western blot analysis of GPD1L expressed in Mouse stomach,293T,A-549 using GPD1L Rabbit pAb at 1:1 000. Secondary antibody: HRP Goat Anti-Rabbit IgG (H+L) at 1:5000. Lysates/proteins: 30ug per lane. B locking buffer: 5% non-fat dry milk in TBST. Detection: ECL Enhanced Kit. Exposure time: 120s.

## 实验步骤

访问官网浏览详情: [www.ablybio.cn](http://www.ablybio.cn)