

ALDH1L2 Rabbit pAb

货号: **AYP18950**

产品信息

反应	Human,Mouse,Rat
宿主	Rabbit
克隆性	Polyclonal
预测反应	
应用	WB
推荐浓度	WB: 1:1000 - 1:5000
理论分子量	22kDa/57kDa/101kDa
实测分子量	102KDa
形式	Liquid
保存条件	Store at -20°C. Avoid freeze / thaw cycles. Buffer: PBS with 0.01% thiomersal,50% glycerol,pH7.3.
偶联物	Unconjugated
阳性对照	Mouse pancreas,Rat pancreas,Rat liver
细胞定位	Mitochondrion
纯化	Affinity purification

抗原信息

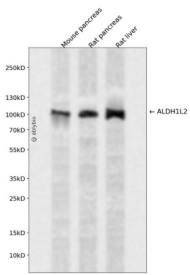
抗原信息	Recombinant fusion protein containing a sequence corresponding to amino acids 280-480 of human ALDH1L2 (NP_001029345.2).
序列	EPLEIKGAKKPGLVTKNGLVLFNGDGKALTVRNLQFEDGKMIPASQYFSTGETSVVELTAEVVKVAETIKVIWAGILSNVPIIE DSTDFFKSGASSMDVARLVVEIRQKCGGLQLQNEVDYMATKFEGFIQKVVRKLRGEDQEVELVDYISKEVNEIMVKMPY QCFINGQFTDADDGKTYDTINPTDGSTICKVSYASLA

靶点信息

研究背景	This gene encodes a member of both the aldehyde dehydrogenase superfamily and the formyl transferase superfamily. This member is the mitochondrial form of 10-formyltetrahydrofolate dehydrogenase (FDH), which converts 10-formyltetrahydrofolate to tetrahydrofolate and CO ₂ in an NADP(+)-dependent reaction, and plays an essential role in the distribution of one-carbon groups between the cytosolic and mitochondrial compartments of the cell. Alternatively spliced transcript variants have been found for this gene.
------	--

基因ID	160428
基因名	ALDH1L2
Swiss	Q3SY69
别名	ALDH1L2;mtFDH

产品验证



Western blot analysis of ALDH1L2 expressed in Mouse pancreas, Rat pancreas, Rat liver using ALDH1L2 Rabbit pAb at 1:1000. Secondary antibody: HRP Goat Anti-Rabbit IgG (H+L) at 1:5000. Lysates/proteins : 30ug per lane. Blocking buffer: 5% non-fat dry milk in TBST. Detection: ECL Enhanced Kit. Exposure time: 120s.

实验步骤

访问官网浏览详情: www.ablybio.cn