

# CORO2A Rabbit pAb

货号: **AYP18945**

## 产品信息

|       |  |
|-------|--|
| 反应    | Human,Mouse,Rat  |
| 宿主    | Rabbit   |
| 克隆性   | Polyclonal   |
| 预测反应  |  |
| 应用    | WB   |
| 推荐浓度  | <b>WB:</b> 1:500 - 1:2000  |
| 理论分子量 | 59kDa  |
| 实测分子量 | 60kDa  |
| 形式    | Liquid   |
| 保存条件  | Store at -20°C. Avoid freeze / thaw cycles.<br>Buffer: PBS with 0.01% thiomersal,50% glycerol,pH7.3. |
| 偶联物   | Unconjugated   |
| 阳性对照  | HT-29,OVCAR3,Mouse eye,Rat eye   |
| 细胞定位  |  |
| 纯化    | Affinity purification  |

## 抗原信息

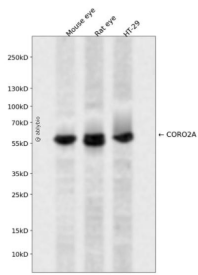
|      |  |
|------|--|
| 抗原信息 | Recombinant fusion protein containing a sequence corresponding to amino acids 376-525 of human CORO2A (NP_003380.3).                                   |
| 序列   | QPSLTAQEWLSGMNRDPILVSLRPGSELLRPHPLPAERPIFNMAPASPRLNQTEKLAAEDGWRSSSLLEEKMPRWAAEH<br>RLEEKKTWLTNGFDVFECPPTENELLQMFYRQQEEIRRLRELLTQREVQAKQLELEIKNLRMGSEQL |

## 靶点信息

|      |  |
|------|--|
| 研究背景 | This gene encodes a member of the WD repeat protein family. WD repeats are minimally conserved regions of approximately 40 amino acids typically bracketed by gly-his and trp-aspartate (GH-WD), which may facilitate formation of heterotrimeric or multiprotein complexes. Members of this family are involved in a variety of cellular processes, including cell cycle progression, signal transduction, apoptosis, and gene regulation. This protein contains 5 WD repeats, and has a structural similarity with actin-binding proteins: the D. discoideum coronin and the human p57 protein, suggesting that this protein may also be an actin-binding protein that regulates cell motility. Alternative splicing of this gene generates 2 transcript variants. |
|------|--|

|       |                          |
|-------|--------------------------|
| 基因ID  | 7464                     |
| 基因名   | CORO2A                   |
| Swiss | Q92828                   |
| 别名    | CORO2A;CLIPINB;IR10;WDR2 |

## 产品验证



Western blot analysis of CORO2A expressed in Mouse eye,Rat eye,HT-29 using CORO2A Rabbit pAb at 1:1000. Secondary antibody: HRP Goat Anti-Rabbit IgG (H+L) at 1:5000. Lysates/proteins: 30ug per lane. Blocking buffer: 5% non-fat dry milk in TBST. Detection: ECL Enhanced Kit. Exposure time: 120s.

## 实验步骤

访问官网浏览详情: [www.ablybio.cn](http://www.ablybio.cn)