

PRAME Rabbit pAb

货号: **AYP18927**

产品信息

反应	Human,Mouse,Rat
宿主	Rabbit
克隆性	Polyclonal
预测反应	
应用	WB
推荐浓度	WB: 1:500 - 1:2000
理论分子量	57kDa
实测分子量	58kDa
形式	Liquid
保存条件	Store at -20°C. Avoid freeze / thaw cycles. Buffer: PBS with 0.01% thiomersal,50% glycerol,pH7.3.
偶联物	Unconjugated
阳性对照	U2OS,U-251MG,Mouse liver,Mouse lung,Rat lung
细胞定位	Cell membrane,Nucleus
纯化	Affinity purification

抗原信息

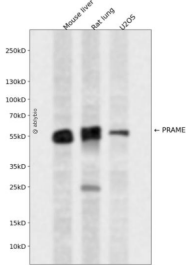
抗原信息	Recombinant fusion protein containing a sequence corresponding to amino acids 1-200 of human PRAME (NP_006106.1).
序列	MERRRLWGSIQSRYISMSVWTSRRLVELAGQSLKDEALAIAALELLPRELFPPLFMAAFDGRHSQTLKAMVQAWPFTCL PLGVLMKQGHLHLETFKAVLDGLDVLLAQEVRPRRWKLVLDLRKNSHQDFWTVWSGNRASLYSFPEPEAAQPMTKKR KVDGLSTEAEQPFIPVEVLVDLFLKEGACDELFSYLIEKVK

靶点信息

研究背景	This gene encodes an antigen that is preferentially expressed in human melanomas and that is recognized by cytolytic T lymphocytes. It is not expressed in normal tissues, except testis. The encoded protein acts as a repressor of retinoic acid receptor, and likely confers a growth advantage to cancer cells via this function. Alternative splicing results in multiple transcript variants.
基因ID	23532

基因名	PRAME
Swiss	P78395
别名	PRAME;CT130;MAPE;OIP-4;OIP4

产品验证



Western blot analysis of PRAME expressed in Mouse liver,Rat lung,U2OS using PRAME Rabbit pAb at 1:1 000. Secondary antibody: HRP Goat Anti-Rabbit IgG (H+L) at 1:5000. Lysates/proteins: 30ug per lane. Blocking buffer: 5% non-fat dry milk in TBST. Detection: ECL Enhanced Kit. Exposure time: 120s.

实验步骤

访问官网浏览详情: www.ablybio.cn