

DNASE1 Rabbit pAb

货号: **AYP18918**

产品信息

| | |
|-------|--|
| 反应 | Mouse,Rat |
| 宿主 | Rabbit |
| 克隆性 | Polyclonal |
| 预测反应 | |
| 应用 | WB IF/ICC |
| 推荐浓度 | WB: 1:500 - 1:2000 IF/ICC: 1:50 - 1:200 |
| 理论分子量 | 19kDa/31kDa |
| 实测分子量 | 19kDa/31kDa |
| 形式 | Liquid |
| 保存条件 | Store at -20°C. Avoid freeze / thaw cycles. Buffer: PBS with 0.01% thiomersal,50% glycerol,pH7.3. |
| 偶联物 | Unconjugated |
| 阳性对照 | |
| 细胞定位 | Nucleus envelope,Secreted |
| 纯化 | Affinity purification |

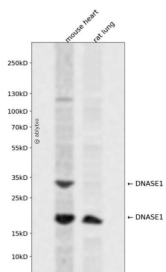
抗原信息

| | |
|------|--|
| 抗原信息 | Recombinant fusion protein containing a sequence corresponding to amino acids 30-235 of human DNASE1 (NP_005214.2). |
| 序列 | IQTFGETKMSNATLVSYIVQILSRVDIALVQEVDRSHLTAVGKLLDNLNQDAPDTYHYVSEPLGRNSYKERYLFVYRPDQV SAVDSYYYDDGCEPCGNDTFNREPAIVRFFSRFTEVREFAIVPLHAAPGDVAEIDALYDVYLDVQEKWGLEDMMLMGDF NAGCSYVRPSQWSSIRLWTSPTFQWLIPDSADTTATPTHCAYDR |

靶点信息

| | |
|-------|---|
| 研究背景 | This gene encodes a member of the DNase family. This protein is stored in the zymogen granules of the nuclear envelope and functions by cleaving DNA in an endonucleolytic manner. At least six autosomal codominant alleles have been characterized, DNASE1*1 through DNASE1*6, and the sequence of DNASE1*2 represented in this record. Mutations in this gene have been associated with systemic lupus erythematosus (SLE), an autoimmune disease. A recombinant form of this protein is used to treat the one of the symptoms of cystic fibrosis by hydrolyzing the extracellular DNA in sputum and reducing its viscosity. Alternate transcriptional splice variants of this gene have been observed but have not been thoroughly characterized. |
| 基因ID | 1773 |
| 基因名 | DNASE1 |
| Swiss | P24855 |
| 别名 | DNASE1;DNL1;DRNI |

产品验证



Western blot analysis of DNASE1 expressed in mouse heart, rat lung using DNASE1 Rabbit pAb at 1:1000. Secondary antibody: HRP Goat Anti-Rabbit IgG (H+L) at 1:5000. Lysates/proteins: 30ug per lane. Blocking buffer: 5% non-fat dry milk in TBST. Detection: ECL Enhanced Kit. Exposure time: 120s.

实验步骤

访问官网浏览详情: www.ablybio.cn