

# SLC37A4 Rabbit pAb

货号: AYP18906

## 产品信息

反应	Human,Mouse,Rat
宿主	Rabbit
克隆性	Polyclonal
预测反应	
应用	WB IHC
推荐浓度	<b>WB:</b> 1:500 - 1:2000 <b>IHC:</b> 1:50 - 1:200
理论分子量	46kDa/48kDa
实测分子量	46KDa
形式	Liquid
保存条件	Store at -20°C. Avoid freeze / thaw cycles. Buffer: PBS with 0.01% thiomersal,50% glycerol,pH7.3.
偶联物	Unconjugated
阳性对照	HepG2
细胞定位	Endoplasmic reticulum membrane,Multi-pass membrane protein
纯化	Affinity purification

## 抗原信息

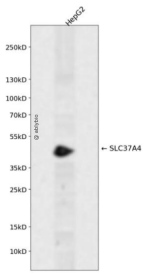
抗原信息	A synthetic peptide corresponding to a sequence within amino acids 300 to the C-terminus of human SLC 37A4 (NP_001157752.1).
序列	RHGLLLFMMAGMTVSMYLFRTVTSDSPKLWILVLGAVFGFSSYGPIALFGVIANESAPPNLCGTSHAIVGLMANVGGFLA GLPFSTIAKHYSWSTAFWVAEVICAASTAAFFLLRNIRTKMGRVSKKAE

## 靶点信息

研究背景	This gene regulates glucose-6-phosphate transport from the cytoplasm to the lumen of the endoplasmic reticulum, in order to maintain glucose homeostasis. It also plays a role in ATP-mediated calcium sequestration in the lumen of the endoplasmic reticulum. Mutations in this gene have been associated with various forms of glycogen storage disease. Alternative splicing in this gene results in multiple transcript variants.
------	--

基因ID	2542
基因名	SLC37A4
Swiss	O43826
别名	SLC37A4;G6PT1;G6PT2;G6PT3;GSD1b;GSD1c;GSD1d;PRO0685;TRG-19;TRG19

## 产品验证



Western blot analysis of SLC37A4 expressed in HepG2 using SLC37A4 Rabbit pAb at 1:1000. Secondary antibody: HRP Goat Anti-Rabbit IgG (H+L) at 1:5000. Lysates/proteins: 30ug per lane. Blocking buffer: 5% non-fat dry milk in TBST. Detection: ECL Enhanced Kit. Exposure time: 120s.

## 实验步骤

访问官网浏览详情: [www.ablybio.cn](http://www.ablybio.cn)