

SLC26A2 Rabbit pAb

货号: **AYP18904**

产品信息

反应	Human,Mouse,Rat
宿主	Rabbit
克隆性	Polyclonal
预测反应	
应用	WB
推荐浓度	WB: 1:500 - 1:2000
理论分子量	81kDa
实测分子量	82kDa
形式	Liquid
保存条件	Store at -20°C. Avoid freeze / thaw cycles. Buffer: PBS with 0.01% thiomersal,50% glycerol,pH7.3.
偶联物	Unconjugated
阳性对照	SKOV3,Jurkat,A-549,Mouse testis,Rat intestine
细胞定位	Membrane,Multi-pass membrane protein
纯化	Affinity purification

抗原信息

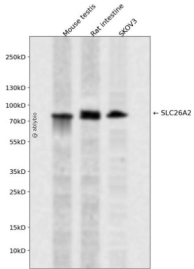
抗原信息	Recombinant fusion protein containing a sequence corresponding to amino acids 1-111 of human SLC26A2 (NP_000103.2).
序列	MSESKEQHNVSPRDSAEGNDSYPSGIHLELQRESSTDFKQFETNDQCRPYHRILIERQEKSDTNFKEFVIKKLQKNCQCS PAKAKNMILGFLPVLQWLPKYDLKKNILGD

靶点信息

研究背景	The diastrophic dysplasia sulfate transporter is a transmembrane glycoprotein implicated in the pathogenesis of several human chondrodysplasias. It apparently is critical in cartilage for sulfation of proteoglycans and matrix organization.
基因ID	1836

基因名	SLC26A2
Swiss	P50443
别名	SLC26A2;D5S1708;DTD;DTDST;EDM4;MST153;MSTP157

产品验证



Western blot analysis of SLC26A2 expressed in Mouse testis, Rat intestine, SKOV3 using SLC26A2 Rabbit pAb at 1:1000. Secondary antibody: HRP Goat Anti-Rabbit IgG (H+L) at 1:5000. Lysates/proteins: 30ug per lane. Blocking buffer: 5% non-fat dry milk in TBST. Detection: ECL Enhanced Kit. Exposure time: 120s.

实验步骤

访问官网浏览详情: www.ablybio.cn