

HIGD1A Rabbit pAb

货号: **AYP18894**

产品信息

反应	Human
宿主	Rabbit
克隆性	Polyclonal
预测反应	
应用	WB IHC IF/ICC
推荐浓度	WB: 1:500 - 1:2000 IHC: 1:50 - 1:100 IF/ICC: 1:50 - 1:100
理论分子量	10kDa/11kDa
实测分子量	14kDa
形式	Liquid
保存条件	Store at -20°C. Avoid freeze / thaw cycles. Buffer: PBS with 0.01% thiomersal, 50% glycerol, pH7.3.
偶联物	Unconjugated
阳性对照	HeLa, HepG2, 293T, K-562
细胞定位	Mitochondrion inner membrane, Mitochondrion membrane, Multi-pass membrane protein
纯化	Affinity purification

抗原信息

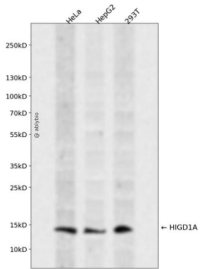
抗原信息	A synthetic peptide corresponding to a sequence within amino acids 1-93 of human HIGD1A (NP_054775.2).
序列	MSTD TGVS LPSY EEDQ GSKLIR KAKEAP FVPV GIAGFAAIVAYGLYK LKSRGNTKMSIHLIHM RVAAQGFVVGAMTVGMGYS MYREFWAKPKP

靶点信息

研究背景	Proposed subunit of cytochrome c oxidase (COX, complex IV, which is the terminal component of the mitochondrial respiratory chain that catalyzes the reduction of oxygen to water. May play a role in the assembly of respiratory supercomplexes.
基因ID	25994

基因名	HIGD1A
Swiss	Q9Y241
别名	HIGD1A;HIG1;RCF1a

产品验证



Western blot analysis of HIGD1A expressed in HeLa, HepG2, 293T using HIGD1A Rabbit pAb at 1:1000. Secondary antibody: HRP Goat Anti-Rabbit IgG (H+L) at 1:5000. Lysates/proteins: 30ug per lane. Blocking buffer: 5% non-fat dry milk in TBST. Detection: ECL Enhanced Kit. Exposure time: 120s.

实验步骤

访问官网浏览详情: www.ablybio.cn