

# APPL2 Rabbit pAb

货号: **AYP18888**

## 产品信息

反应	Human,Mouse,Rat
宿主	Rabbit
克隆性	Polyclonal
预测反应	
应用	WB IHC
推荐浓度	<b>WB:</b> 1:500 - 1:2000 <b>IHC:</b> 1:50 - 1:100
理论分子量	69kDa/74kDa/75kDa
实测分子量	74kDa
形式	Liquid
保存条件	Store at -20°C. Avoid freeze / thaw cycles. Buffer: PBS with 0.01% thiomersal,50% glycerol,pH7.3.
偶联物	Unconjugated
阳性对照	SH-SY5Y,HT-29,Mouse heart,Rat pancreas
细胞定位	Early endosome membrane,Nucleus,Peripheral membrane protein
纯化	Affinity purification

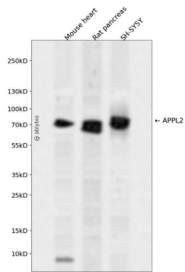
## 抗原信息

抗原信息	Recombinant fusion protein containing a sequence corresponding to amino acids 1-300 of human APPL2 ( NP_060641.2).
序列	MPAVDKLLLEEALQDSPQTRSLLSVFEEADAGTLTDYTNQLLQAMQRVYGAQNEMCLATQQLSKQLLAYEKQNFALGKGD EEVISTLHYFSKVVDLNLHTELAQLADTMVLPPIQFREKDLTEVSTLKDGLFGLASNEHDLSMAKYSRLPKKKENEKVKTE VGKEVAAARRKQHLSSLQYYCALNALQYRKQMAMMEPMIGFAHGQINFFKKAEMFSKRMDLSSVADMVQSIQVELE AEAEMRVSQQELLSVDESUYTPDSDVAAPQINRNLIQKAGYLNLRNKTGLVTTTWERL

## 靶点信息

研究背景	The protein encoded by this gene is one of two effectors of the small GTPase RAB5A/Rab5, which are involved in a signal transduction pathway. Both effectors contain an N-terminal Bin/Amphiphysin/Rvs (BAR) domain, a central pleckstrin homology (PH) domain, and a C-terminal phosphotyrosine binding (PTB) domain, and they bind the Rab5 through the BAR domain. They are associated with endosomal membranes and can be translocated to the nucleus in response to the EGF stimulus. They interact with the NuRD/MeCP1 complex (nucleosome remodeling and deacetylase /methyl-CpG-binding protein 1 complex) and are required for efficient cell proliferation. A chromosomal aberration t(12;22)(q24.1;q13.3) involving this gene and the PSAP2 gene results in 22q13.3 deletion syndrome, also known as Phelan-McDermid syndrome.
基因ID	55198
基因名	APPL2
Swiss	Q8NEU8
别名	APPL2;DIP13B

## 产品验证



Western blot analysis of APPL2 expressed in Mouse heart, Rat pancreas, SH-SY5Y using APPL2 Rabbit pAb at 1:1000. Secondary antibody: HRP Goat Anti-Rabbit IgG (H+L) at 1:5000. Lysates/proteins: 30ug per lane. Blocking buffer: 5% non-fat dry milk in TBST. Detection: ECL Enhanced Kit. Exposure time: 120s.

## 实验步骤

访问官网浏览详情: [www.ablybio.cn](http://www.ablybio.cn)