

WASF1 Rabbit pAb

货号: **AYP18873**

产品信息

反应	Human
宿主	Rabbit
克隆性	Polyclonal
预测反应	
应用	WB
推荐浓度	WB: 1:500 - 1:2000
理论分子量	61kDa
实测分子量	62kDa
形式	Liquid
保存条件	Store at -20°C. Avoid freeze / thaw cycles. Buffer: PBS with 0.01% thiomersal, 50% glycerol, pH7.3.
偶联物	Unconjugated
阳性对照	U-87MG, DU145, HeLa, K-562, 293T
细胞定位	Cell junction, Cytoplasm, cytoskeleton, focal adhesion, synapse
纯化	Affinity purification

抗原信息

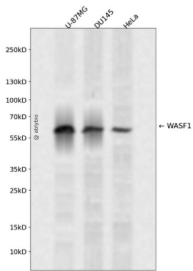
抗原信息	A synthetic peptide corresponding to a sequence within amino acids 400 to the C-terminus of human WASF1 (NP_001020107.1).
序列	VARAAPVCETVPVHPLPQGEVQGLPPPPPPPLPPPGIRPSSPVTVTALAHPPSGLHPTSTAPGPHVPLMPPSPPSQVIPASEPKRHPSTLPVISDARSVLLEAIRKGIQLRKVEEQREQEAKHERIENDVATILSRRIAVEYSDSEDDSEFDEVDWLE

靶点信息

研究背景	The protein encoded by this gene, a member of the Wiskott-Aldrich syndrome protein (WASP)-family, plays a critical role downstream of Rac, a Rho-family small GTPase, in regulating the actin cytoskeleton required for membrane ruffling. It has been shown to associate with an actin nucleation core Arp2/3 complex while enhancing actin polymerization in vitro. Wiskott-Aldrich syndrome is a disease of the immune system, likely due to defects in regulation of actin cytoskeleton. Multiple alternatively spliced transcript variants encoding the same protein have been found for this gene.
------	--

基因ID	8936
基因名	WASF1
Swiss	Q92558
别名	WASF1;SCAR1;WAVE;WAVE1

产品验证



Western blot analysis of WASF1 expressed in U-87MG,DU145,HeLa using WASF1 Rabbit pAb at 1:1000. Secondary antibody: HRP Goat Anti-Rabbit IgG (H+L) at 1:5000. Lysates/proteins: 30ug per lane. Blocking buffer: 5% non-fat dry milk in TBST. Detection: ECL Enhanced Kit. Exposure time: 120s.

实验步骤

访问官网浏览详情: www.ablybio.cn