

CREB5 Rabbit pAb

货号: **AYP18867**

产品信息

反应	Human,Rat
宿主	Rabbit
克隆性	Polyclonal
预测反应	
应用	WB
推荐浓度	WB: 1:1000 - 1:5000
理论分子量	41kDa/53kDa/56kDa
实测分子量	57kDa
形式	Liquid
保存条件	Store at -20°C. Avoid freeze / thaw cycles. Buffer: PBS with 0.01% thiomersal,50% glycerol,pH7.3.
偶联物	Unconjugated
阳性对照	293T,HeLa,MCF7
细胞定位	Nucleus
纯化	Affinity purification

抗原信息

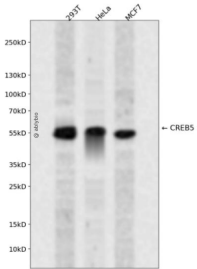
抗原信息	Recombinant fusion protein containing a sequence corresponding to amino acids 210-330 of human CREB 5 (NP_878902.2).
序列	HPAAMSNGNMNTMGHMMEMMGSRDQTPHHMHSHPHQHQLPPHHPYPHQHQPAAHHPHPQPHHQQNHPHHHS HSHLHAHPAHHQTSPPPLHTGNQAQVSPATQQMQPTQTIQPPQPTG

靶点信息

研究背景	The product of this gene belongs to the CRE (cAMP response element)-binding protein family. Members of this family contain zinc-finger and bZIP DNA-binding domains. The encoded protein specifically binds to CRE as a homodimer or a heterodimer with c-Jun or CRE-BP1, and functions as a CRE-dependent trans-activator. Alternatively spliced transcript variants encoding different isoforms have been identified.
基因ID	9586

基因名	CREB5
Swiss	Q02930
别名	CREB5;CRE-BPA;CREB-5

产品验证



Western blot analysis of CREB5 expressed in 293T, HeLa, MCF7 using CREB5 Rabbit pAb at 1:1000. Secondary antibody: HRP Goat Anti-Rabbit IgG (H+L) at 1:5000. Lysates/proteins: 30ug per lane. Blocking buffer: 5% non-fat dry milk in TBST. Detection: ECL Enhanced Kit. Exposure time: 120s.

实验步骤

访问官网浏览详情: www.ablybio.cn