

# IDH3A Rabbit pAb

货号: **AYP18861**

## 产品信息

反应	Human,Mouse,Rat
宿主	Rabbit
克隆性	Polyclonal
预测反应	
应用	WB IHC IF/ICC
推荐浓度	<b>WB:</b> 1:500 - 1:2000 <b>IHC:</b> 1:50 - 1:200 <b>IF/ICC:</b> 1:50 - 1:200
理论分子量	31kDa/40kDa
实测分子量	40kDa
形式	Liquid
保存条件	Store at -20°C. Avoid freeze / thaw cycles. Buffer: PBS with 0.01% thiomersal,50% glycerol,pH7.3.
偶联物	Unconjugated
阳性对照	Raji,NIH/3T3,Mouse brain,Mouse heart,Mouse kidney
细胞定位	Mitochondrion
纯化	Affinity purification

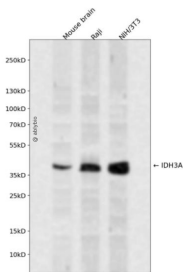
## 抗原信息

抗原信息	Recombinant fusion protein containing a sequence corresponding to amino acids 28-366 of human IDH3A (NP_005521.1).
序列	TGGVQTVTLIPGDGIGPEISAAVMKIFDAAKAPIQWEERNVTAIQGPGGKWMIPSEAKESMDKNKMGLKGPLKTPIAAGHP SMNLLLRKTFDLYANVRPCVSIIEGYKPYTDVNIIVTIRENTEGEYSGLIEHVIVDGVVQSIKLITEGASKRIAEFAFEYARNNHR NVTAVHKANIMRMSDGLFLQKCREVAESCKDIKFNEMYLDTVCLNMVQDPSQFDVLMVLPNLYGDILSDLCAGLIGGLGVT PSGNIGANGVAIFESVHGTAPDIAGKDMANPTALLLSAVMMLRHMGFLDHAARIEAACFATIKDGKSLTKDLGGNAKCS DFTTEICRRVKDLD

## 靶点信息

研究背景	Isocitrate dehydrogenases catalyze the oxidative decarboxylation of isocitrate to 2-oxoglutarate. These enzymes belong to two distinct subclasses, one of which utilizes NAD(+) as the electron acceptor and the other NADP(+). Five isocitrate dehydrogenases have been reported: three NAD(+)-dependent isocitrate dehydrogenases, which localize to the mitochondrial matrix, and two NADP(+)-dependent isocitrate dehydrogenases, one of which is mitochondrial and the other predominantly cytosolic. NAD(+)-dependent isocitrate dehydrogenases catalyze the allosterically regulated rate-limiting step of the tricarboxylic acid cycle. Each isozyme is a heterotetramer that is composed of two alpha subunits, one beta subunit, and one gamma subunit. The protein encoded by this gene is the alpha subunit of one isozyme of NAD(+)-dependent isocitrate dehydrogenase.
基因ID	3419
基因名	IDH3A
Swiss	P50213
别名	IDH3A

## 产品验证



Western blot analysis of IDH3A expressed in Mouse brain, Raji, NIH/3T3 using IDH3A Rabbit pAb at 1:1000. Secondary antibody: HRP Goat Anti-Rabbit IgG (H+L) at 1:5000. Lysates/proteins: 30ug per lane. Blocking buffer: 5% non-fat dry milk in TBST. Detection: ECL Enhanced Kit. Exposure time: 120s.

## 实验步骤

访问官网浏览详情: [www.ablybio.cn](http://www.ablybio.cn)