

# RAB1A Rabbit pAb

货号: **AYP18859**

## 产品信息

反应	Mouse,Rat
宿主	Rabbit
克隆性	Polyclonal
预测反应	
应用	WB IF/ICC
推荐浓度	<b>WB:</b> 1:500 - 1:2000 <b>IF/ICC:</b> 1:50 - 1:200
理论分子量	13kDa/15kDa/22kDa
实测分子量	23kDa
形式	Liquid
保存条件	Store at -20°C. Avoid freeze / thaw cycles. Buffer: PBS with 0.01% thiomersal,50% glycerol,pH7.3.
偶联物	Unconjugated
阳性对照	Mouse liver,Mouse lung
细胞定位	Cytoplasm,Early endosome,Endoplasmic reticulum,Golgi apparatus,Melanosome,Membrane,cytosol
纯化	Affinity purification

## 抗原信息

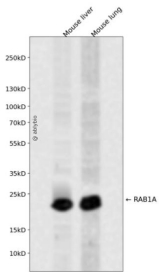
抗原信息	A synthetic peptide corresponding to a sequence within amino acids 1-100 of human RAB1A (NP_004152.1).
序列	MSSMNPEYDYLFKLLIGDSGVGKSCLLLRFADDTYTESYISTIGVDFKIRTIELDGKTIKLIWDTAGQERFRITITSSYYRGAHGIIIVYDVTDAQESFN

## 靶点信息

研究背景	This gene encodes a member of the Ras superfamily of GTPases. Members of the gene family cycle between an inactive GDP-bound and active GTP-bound forms. This small GTPase controls vesicle traffic from the endoplasmic reticulum to the Golgi apparatus. Multiple alternatively spliced transcript variants have been identified for this gene which encode different protein isoforms.
基因ID	5861

基因名	RAB1A
Swiss	P62820
别名	RAB1A;RAB1;YPT1

## 产品验证



Western blot analysis of RAB1A expressed in Mouse liver, Mouse lung using RAB1A Rabbit pAb at 1:1000. Secondary antibody: HRP Goat Anti-Rabbit IgG (H+L) at 1:5000. Lysates/proteins: 30ug per lane. Blocking buffer: 5% non-fat dry milk in TBST. Detection: ECL Enhanced Kit. Exposure time: 120s.

## 实验步骤

访问官网浏览详情: [www.ablybio.cn](http://www.ablybio.cn)