

BATF Rabbit pAb

货号: **AYP18857**

产品信息

反应	Mouse
宿主	Rabbit
克隆性	Polyclonal
预测反应	
应用	WB
推荐浓度	WB: 1:500 - 1:2000
理论分子量	14kDa
实测分子量	14kDa
形式	Liquid
保存条件	Store at -20°C. Avoid freeze / thaw cycles. Buffer: PBS with 0.01% thiomersal,50% glycerol,pH7.3.
偶联物	Unconjugated
阳性对照	Mouse lung,Mouse liver
细胞定位	Cytoplasm,Nucleus
纯化	Affinity purification

抗原信息

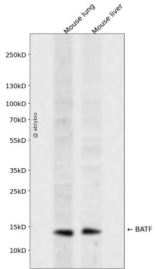
抗原信息	Recombinant fusion protein containing a sequence corresponding to amino acids 1-125 of human BATF (NP_006390.1).
序列	MPHSSDSSDSSFSRSPPPGKQDSSDDVRRVQRREKNRIAAQKSRQRQTQKADTLHLESEDLEKQNAALRKEIKQLTEEL KYFTSVLNSHEPLCSVLAASTPSPPEVVYSAHAFHQPHVSSPRFQP

靶点信息

研究背景	The protein encoded by this gene is a nuclear basic leucine zipper protein that belongs to the AP-1/ATF su perfamily of transcription factors. The leucine zipper of this protein mediates dimerization with members of the Jun family of proteins. This protein is thought to be a negative regulator of AP-1/ATF transcriptional events.
基因ID	10538

基因名	BATF
Swiss	Q16520
别名	BATF;B-ATF;BATF1;SFA-2;SFA2

产品验证



Western blot analysis of BATF expressed in Mouse lung, Mouse liver using BATF Rabbit pAb at 1:1000. Secondary antibody: HRP Goat Anti-Rabbit IgG (H+L) at 1:5000. Lysates/proteins: 30ug per lane. Blocking buffer: 5% non-fat dry milk in TBST. Detection: ECL Enhanced Kit. Exposure time: 120s.

实验步骤

访问官网浏览详情: www.ablybio.cn