

SEC16B Rabbit pAb

货号: **AYP18852**

产品信息

反应	Human,Mouse
宿主	Rabbit
克隆性	Polyclonal
预测反应	
应用	WB
推荐浓度	WB: 1:500 - 1:2000
理论分子量	59kDa/70kDa/116kDa
实测分子量	117kDa
形式	Liquid
保存条件	Store at -20°C. Avoid freeze / thaw cycles. Buffer: PBS with 0.01% thiomersal,50% glycerol,pH7.3.
偶联物	Unconjugated
阳性对照	HeLa,Mouse pancreas
细胞定位	Endoplasmic reticulum membrane,Golgi apparatus membrane,Peripheral membrane protein
纯化	Affinity purification

抗原信息

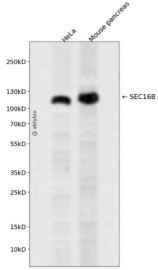
抗原信息	Recombinant fusion protein containing a sequence corresponding to amino acids 250-550 of human SEC16B (NP_149118.2).
序列	DPPASAAWSPVQADVSSAGPKAPMKFYIPHVPVSFGPGGQLVHVGPPSSPTDGQAALVELHSMEVILNDSEEQEEMRSFS GPLIREDVHKVDIMTFCQQKAAQSCKSETLGSRDSALLWQLLVLLCRQNGSMVGS DIAELLMQDCKKLEKYKRQPPVANL INLTDEDWVPLSSGTPNLLTGEIPPSVETPAQIVEKFTRLLYYGRKKEALEWAMKNHLWGHALFLSSKMDPQTYSWVMSG FTSTLALNDPLQTLFQLMSGRIQAATCCGEKQWGDWRPHLAVILSNQAGDPELYQRAIVAI

靶点信息

研究背景	
基因ID	89866
基因名	SEC16B

Swiss	Q96JE7
别名	SEC16B;LZTR2;PGPR-p117;RGPR;SEC16S

产品验证



Western blot analysis of SEC16B expressed in HeLa, Mouse pancreas using SEC16B Rabbit pAb at 1:1000. Secondary antibody: HRP Goat Anti-Rabbit IgG (H+L) at 1:5000. Lysates/proteins: 30ug per lane. Blocking buffer: 5% non-fat dry milk in TBST. Detection: ECL Enhanced Kit. Exposure time: 120s.

实验步骤

访问官网浏览详情: www.ablybio.cn